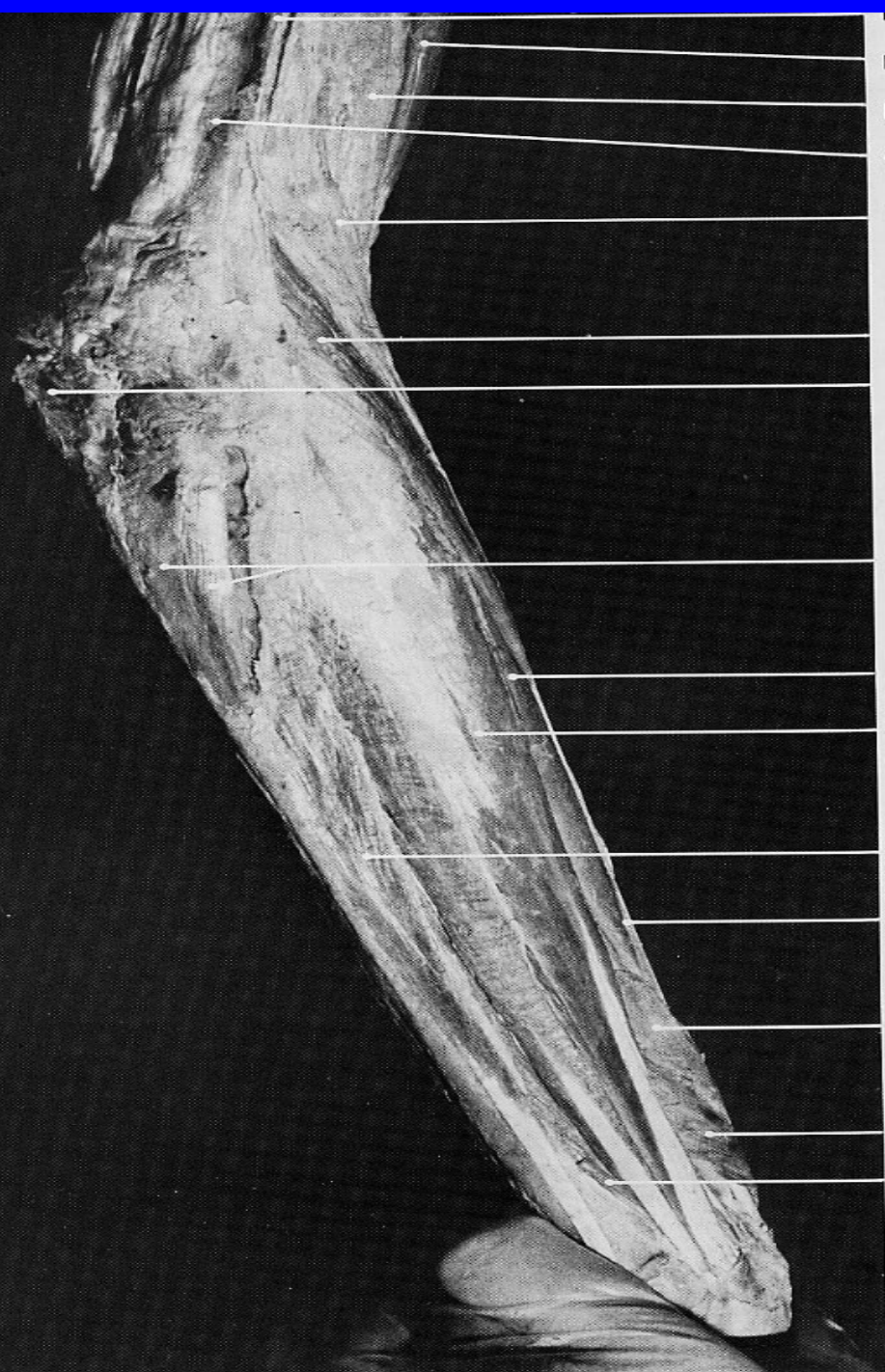


- extensor carpi ulnaris
- extensor digitorum (communis)
- anconeus**
- olecranon
- triceps tendon over medial head of triceps
- triceps (long head)
- triceps (lateral head)
- serratus anterior
- latissimus dorsi
- teres major

FIGURE 2-45 Anconeus.



- lateral intermuscular septum
- biceps brachii
- brachialis
- triceps (lateral head, tendon)
- brachioradialis
- extensor carpi radialis longus (belly)
- olecranon
- anconeus
- extensor carpi radialis brevis
- extensor digitorum (communis)
- extensor carpi ulnaris
- extensor carpi radialis longus (tendon)
- abductor pollicis longus
- extensor pollicis brevis
- extensor indicis

ANCONEUS

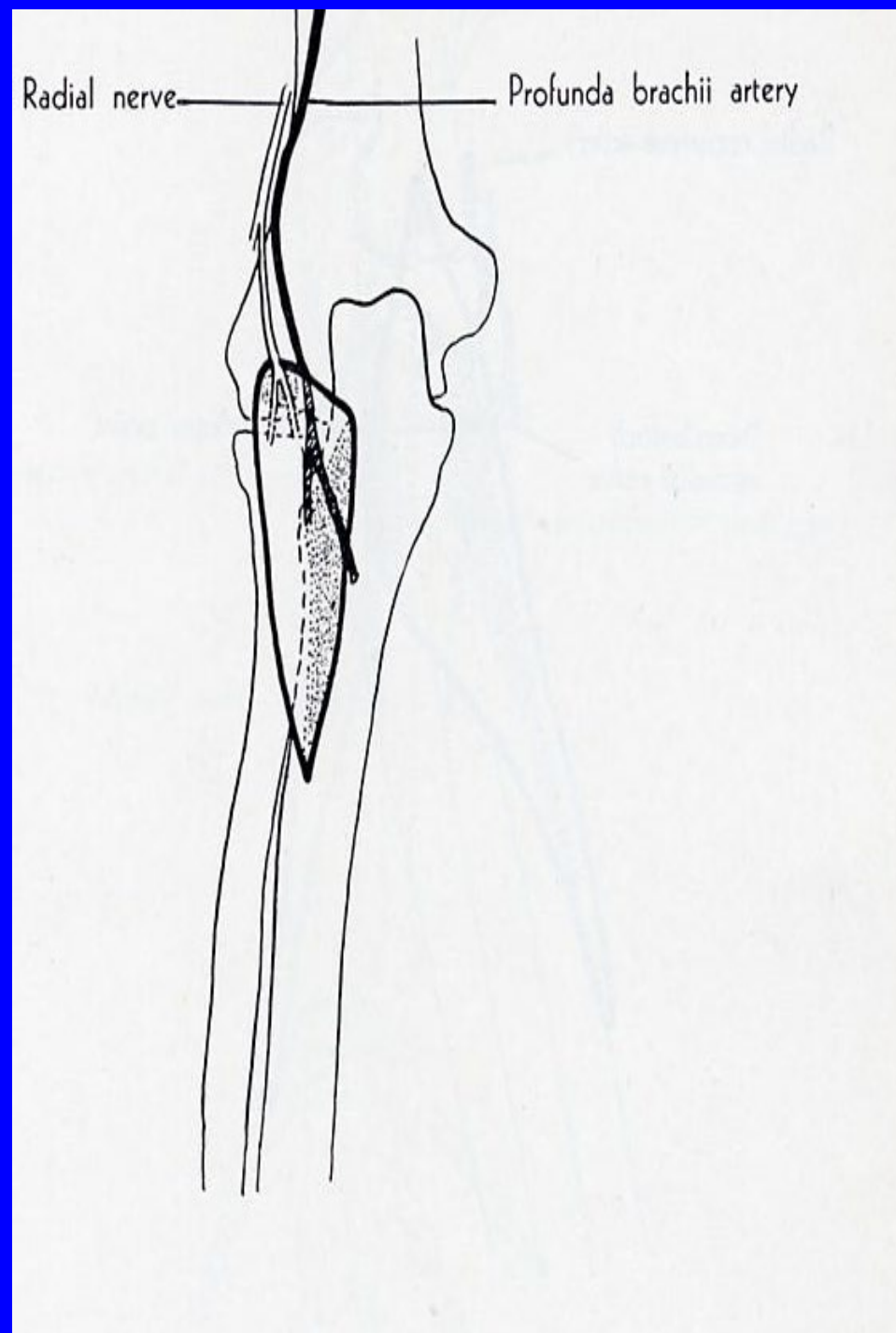
ORIGIN: lateral epicondyle of humerus, post-ligament of elbow joint.

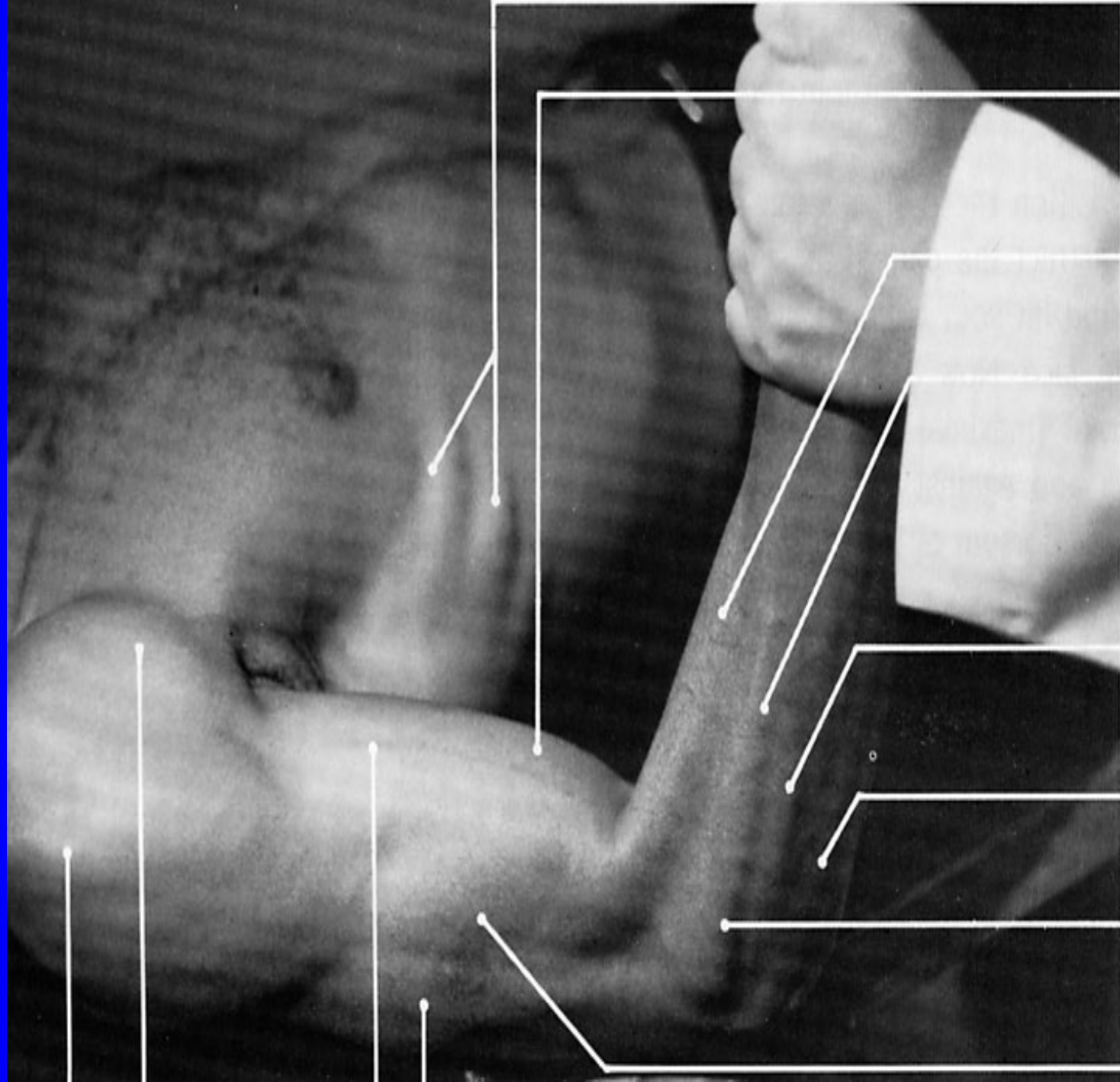
INSERTION: lateral side of olecranon and posterior surface of ulna.

ACTION: assists triceps in extending forearm.

NERVE: radial.

ROOT: C7





serratus anterior

biceps brachii

brachioradialis

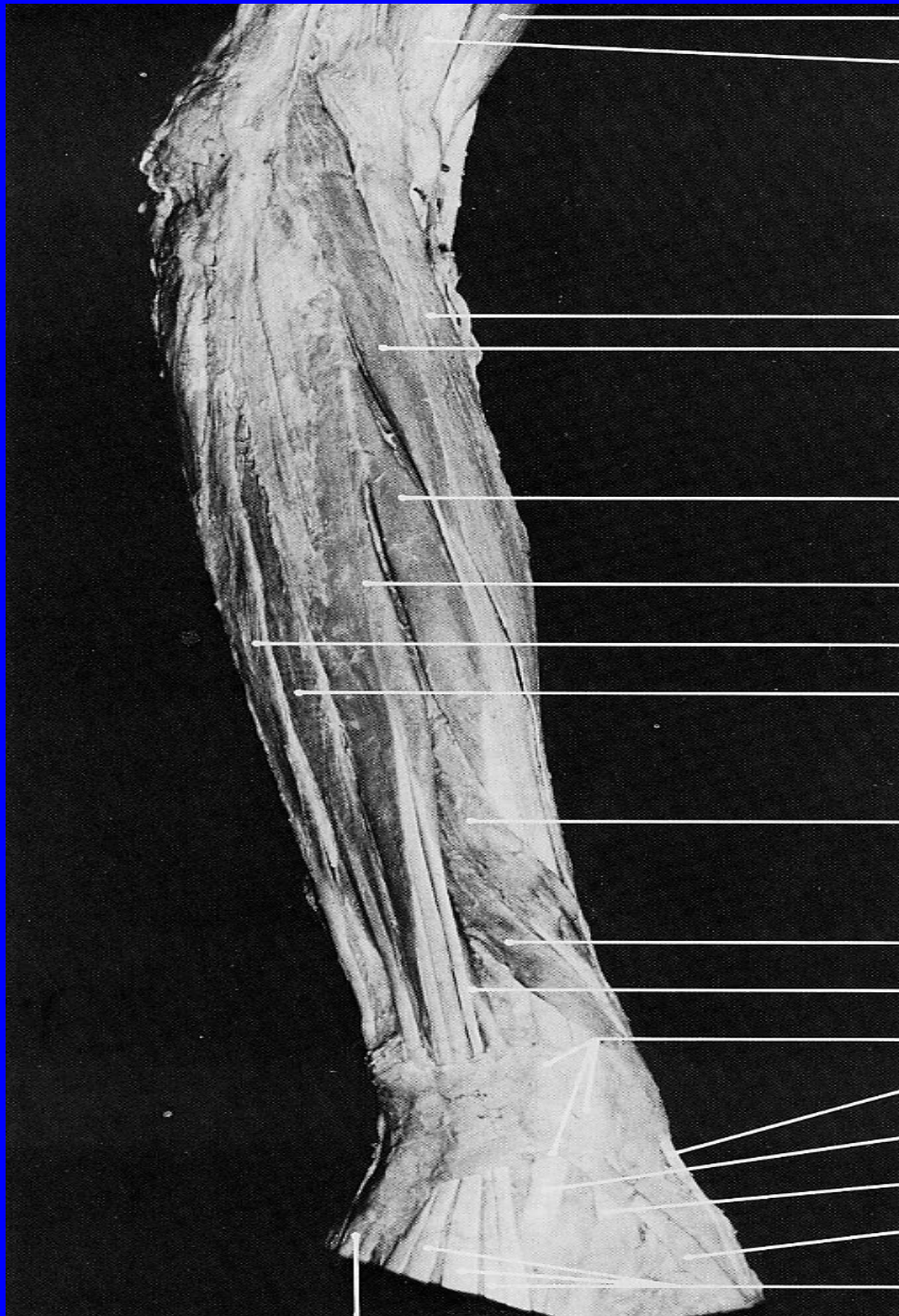
extensor carpi
radialis brevis

extensor digitorum
(communis)

extensor carpi
ulnaris

extensor carpi
radialis longus

brachialis



biceps brachii

brachialis

brachioradialis

extensor carpi radialis longus (belly)

extensor carpi radialis brevis (belly)

extensor digitorum (communis) (belly)

extensor carpi ulnaris

extensor digiti minimi

abductor pollicis longus

extensor pollicis brevis (belly)

extensor pollicis longus (tendon, belly)

extensor retinaculum

extensor pollicis brevis (tendon)

extensor carpi radialis brevis (tendon)

extensor carpi radialis longus (tendon)

extensor pollicis longus (tendon)

extensor digitorum (communis) (tendons)

BRACHIORADIALIS

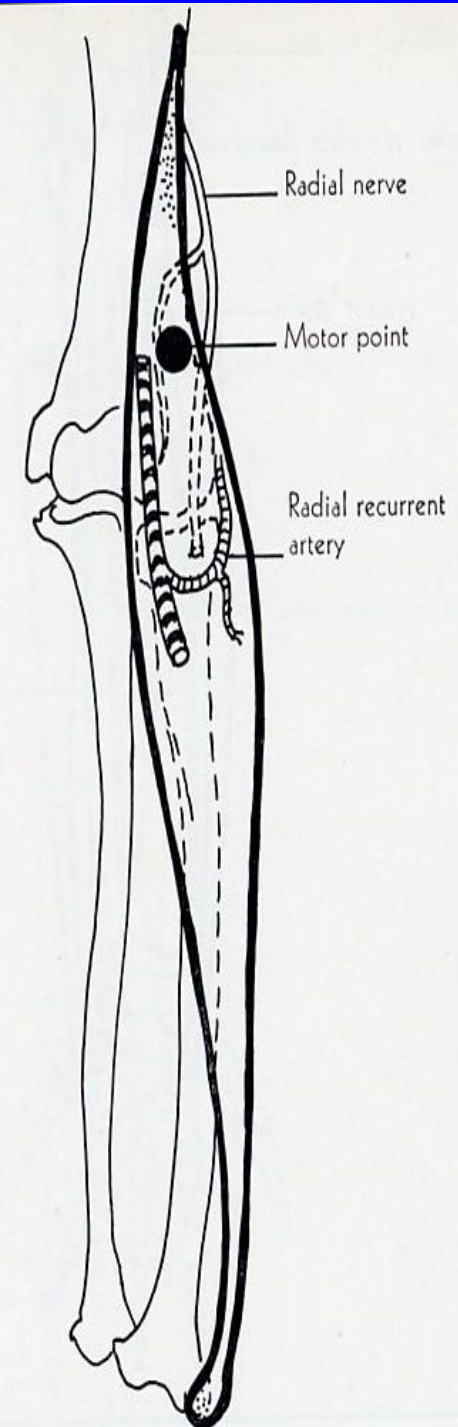
ORIGIN: proximal two thirds of lateral supracondylar ridge of humerus, lateral intermuscular septum.

INSERTION: lateral side of base of styloid process of radius

ACTION: flexes forearm after flexion has been started by biceps and brachialis, may also act as a semi-pronator and semi-supinator.

NERVE: radial

ROOT: C5, C6 mainly C6.





biceps brachii

serratus anterior

triceps
(lateral head)

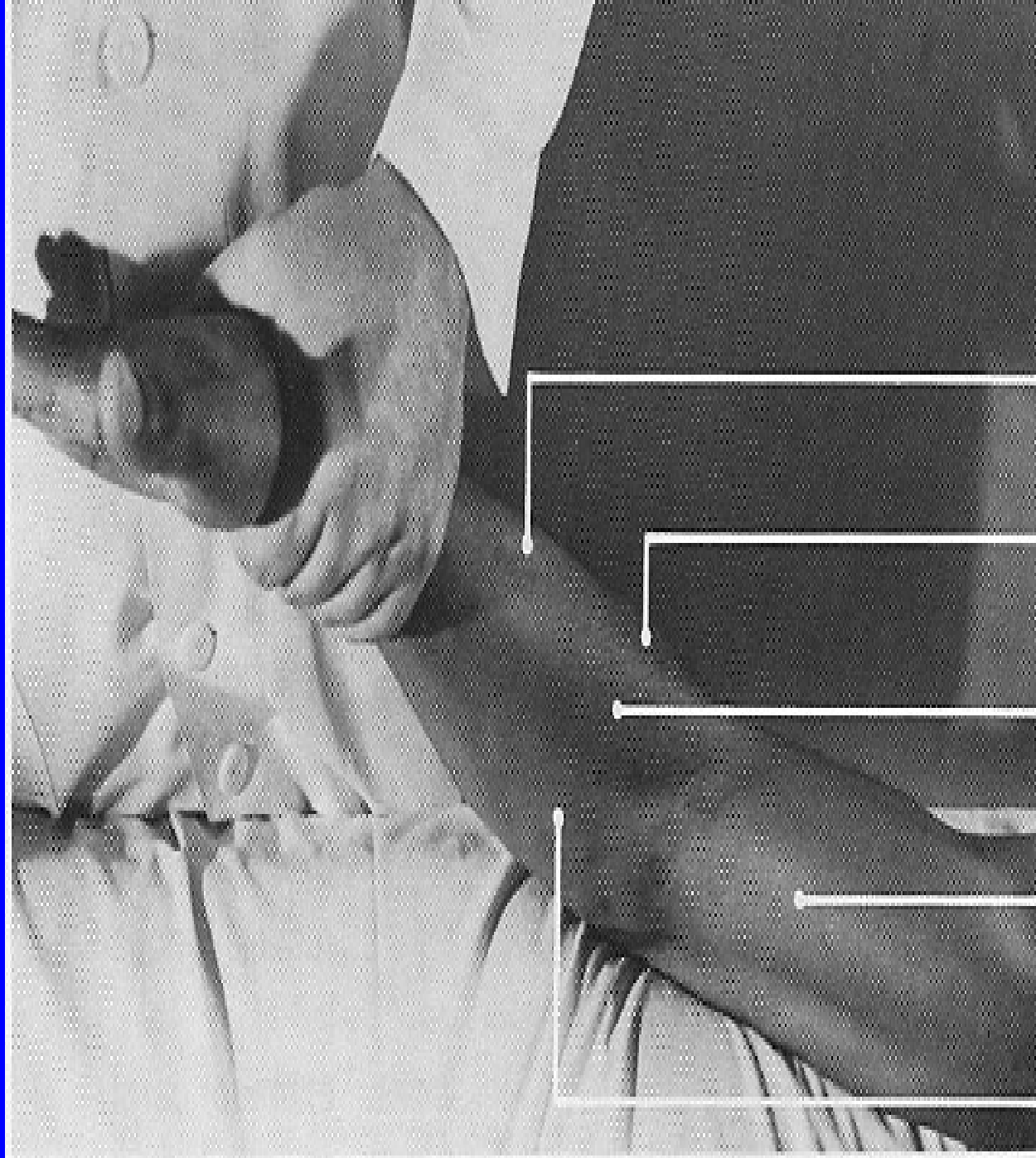
**extensor carpi
radialis longus**

extensor carpi
radialis brevis

extensor digitorum
(communis)

extensor carpi
ulnaris

anconeus



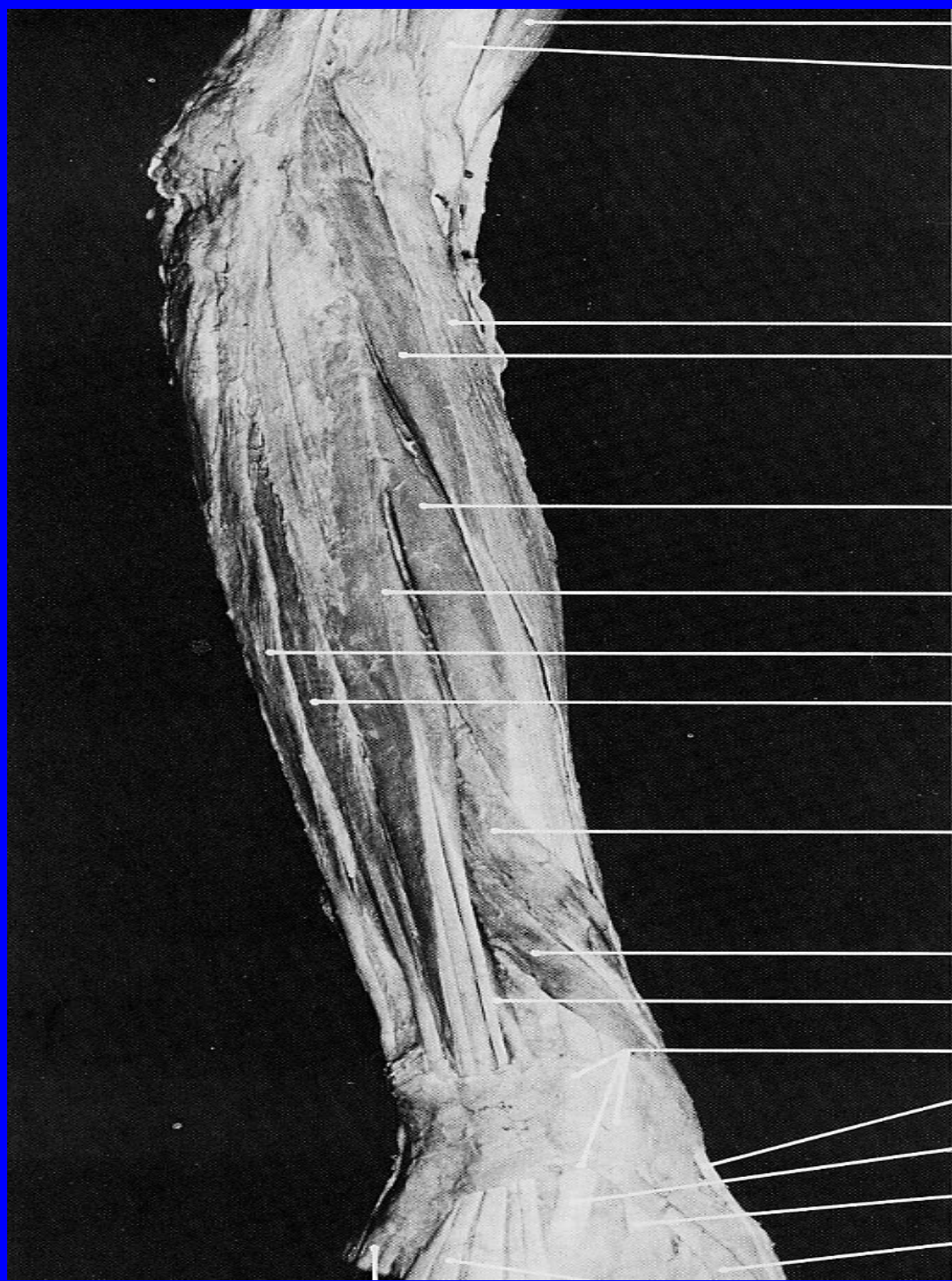
extensor carpi radialis brevis

extensor carpi radialis longus

brachioradialis

biceps brachii

pronator teres



biceps brachii

brachialis

brachioradialis

extensor carpi radialis longus (belly)

extensor carpi radialis brevis (belly)

extensor digitorum (communis) (belly)

extensor carpi ulnaris

extensor digiti minimi

abductor pollicis longus

extensor pollicis brevis (belly)

extensor pollicis longus (tendon, belly)

extensor retinaculum

extensor pollicis brevis (tendon)

extensor carpi radialis brevis (tendon)

extensor carpi radialis longus (tendon)

extensor pollicis longus (tendon)

EXTENSOR CARPI RADIALIS LONGUS

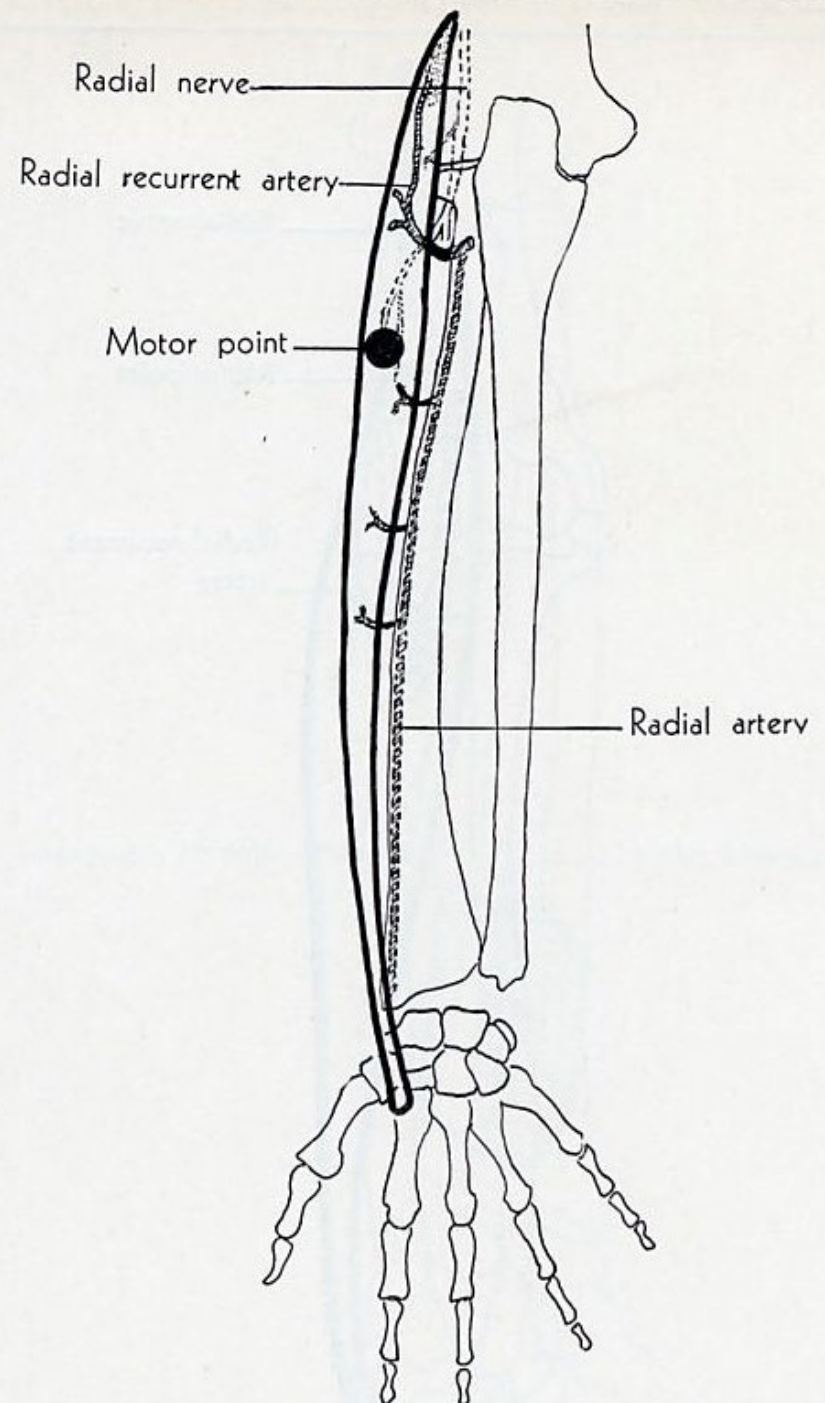
ORIGIN: lower third lateral supracondylar ridge of humerus, lateral intermuscular septum

INSERTION: dorsal surface of base of second metacarpal bone.

ACTION: extends wrist, abduction of hand.

NERVE: radial

ROOT: C5, C6 mainly C6.



EXTENSOR CARPI RADIALIS BREVIS

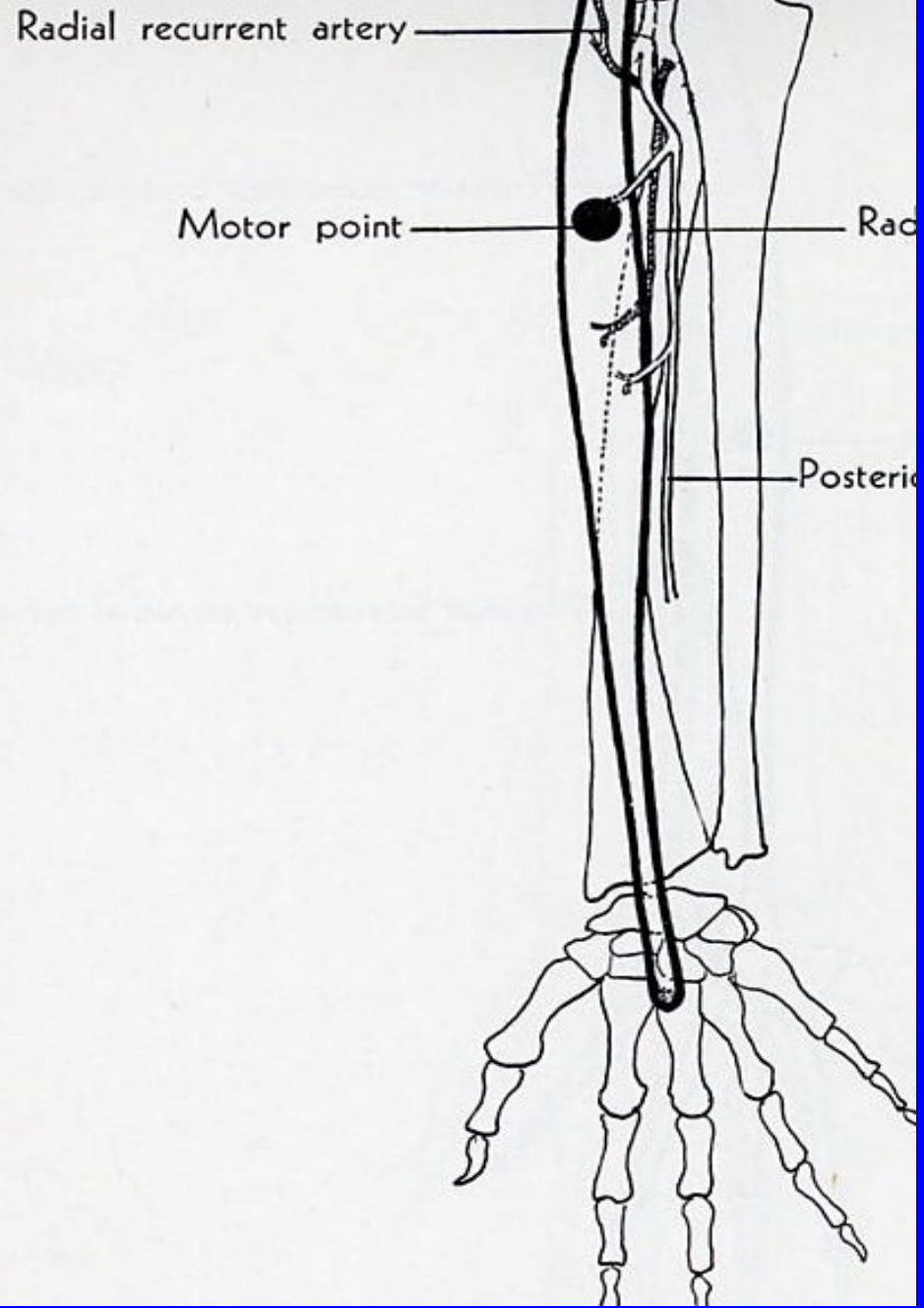
ORIGIN: common ext.tendon from lat.epicondyle of humerus, rad.coll. lig. of elbow joint, intermuscular septum

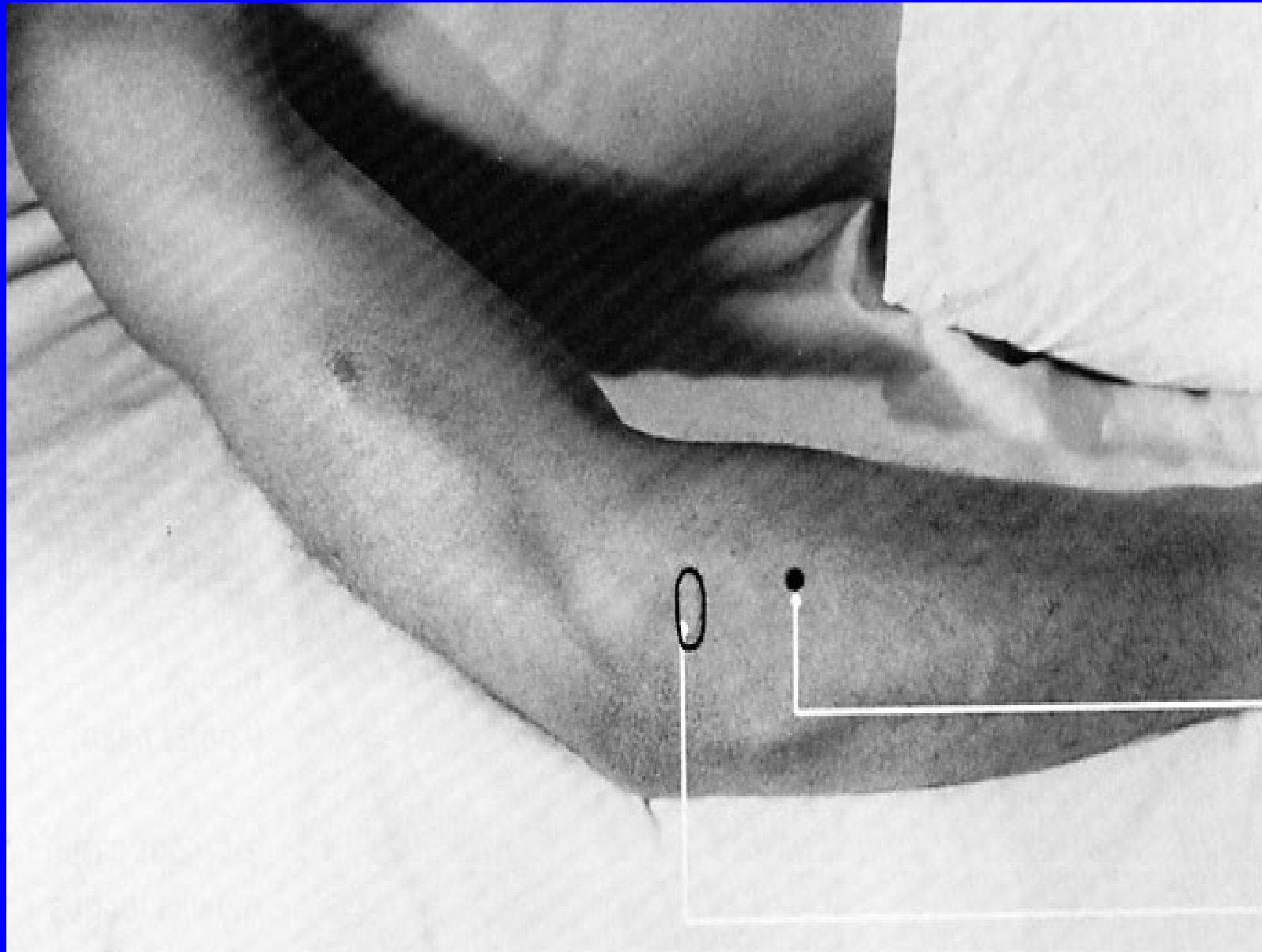
INSERTION: dorsal surface of base of third metacarpal bone.

ACTION: extends wrist, abduction of hand.

NERVE: posterior interosseous of radial.

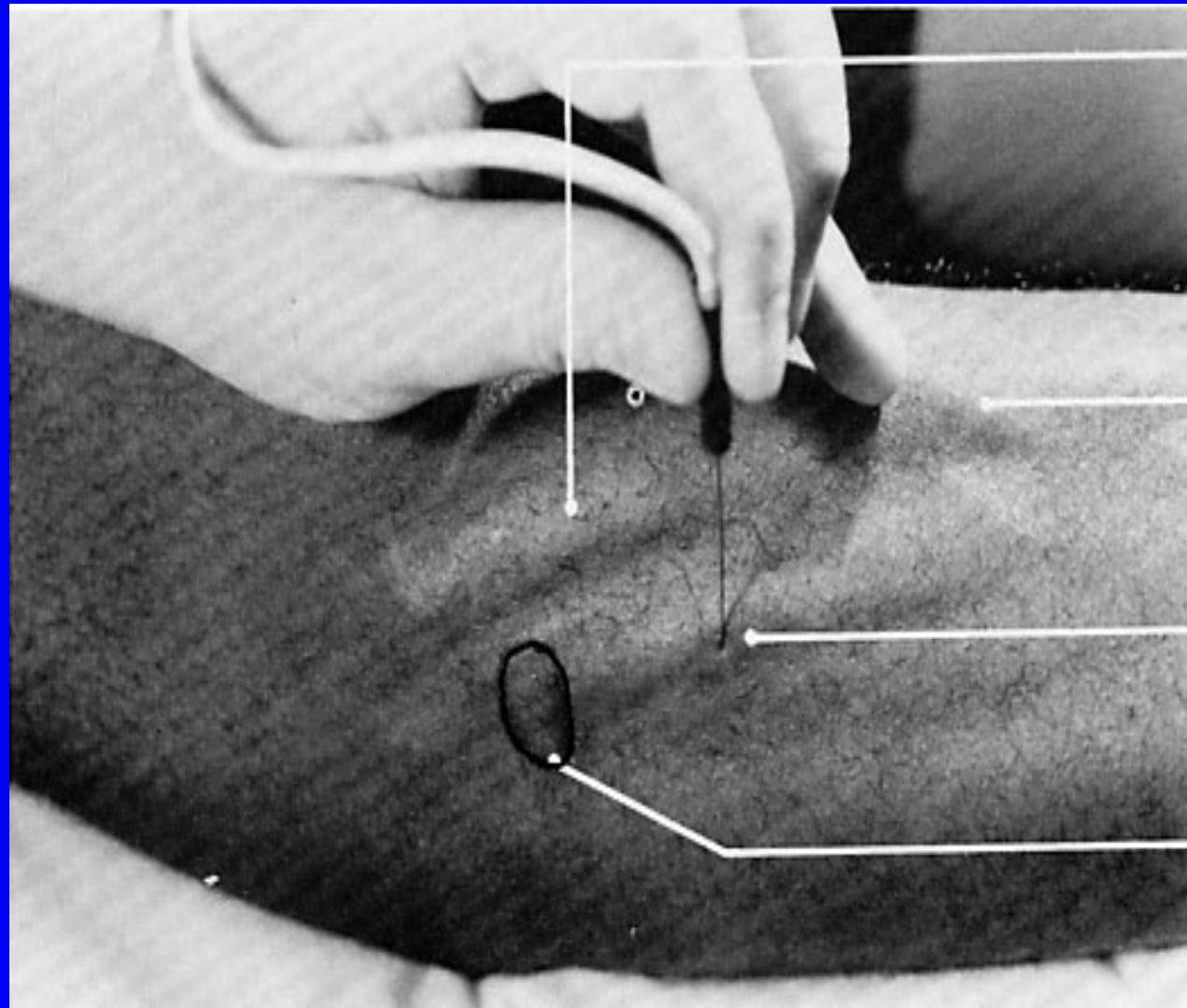
ROOT: C6, C7 mainly C6.





pin insertion s
for **supinator**,
3 cm distal to
head of radius

head of radius

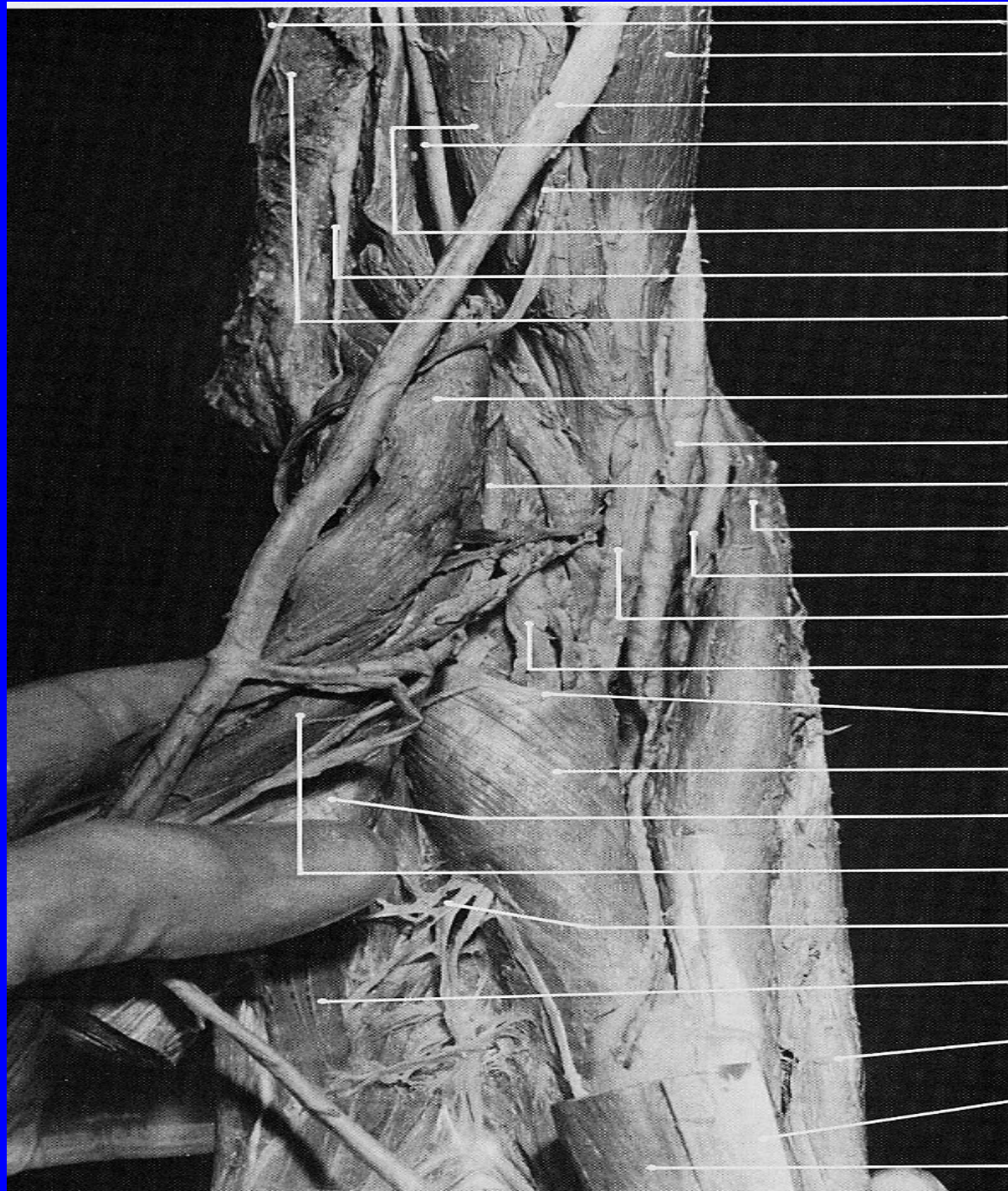


extensor carpi radialis longus

extensor carpi radialis brevis

pin insertion site for **supinator**
(through tendinous origin of
extensor digitorum [communis]
3 cm distal to head of radius

head of radius



- lower lateral brachial cutaneous n.
- biceps brachii
- radial a.
- radial n.
- lateral antebrachial cutaneous n.
- brachialis
- lateral intermuscular septum
- triceps (lateral head)
- brachioradialis (transected and reflected laterally)
- ulnar a.
- superficial branch of radial n.
- pronator teres
- median n.
- biceps brachii (tendon)
- deep branch of radial n.
- arcade of Frohse
- supinator
- extensor carpi radialis brevis (transected and reflected laterally)
- extensor carpi radialis longus (transected and reflected laterally)
- posterior interosseous n.
- extensor digitorum (communis) and extensor digiti minimi (deep surface)
- flexor carpi radialis
- extensor carpi radialis longus (tendon) (transected)
- extensor carpi radialis brevis (tendon) (transected)

SUPINATOR

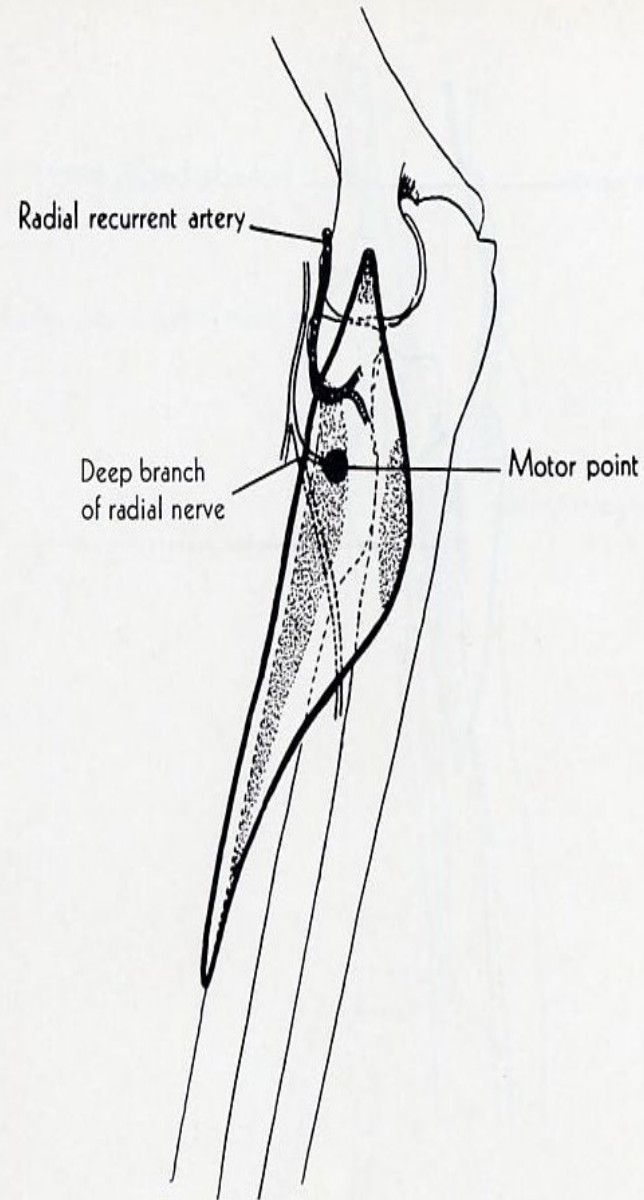
ORIGIN: lat.epicondyle of humerus, lat. lig. of elbow joint, annular lig. of radius, supinator crest and fossa of ulna.

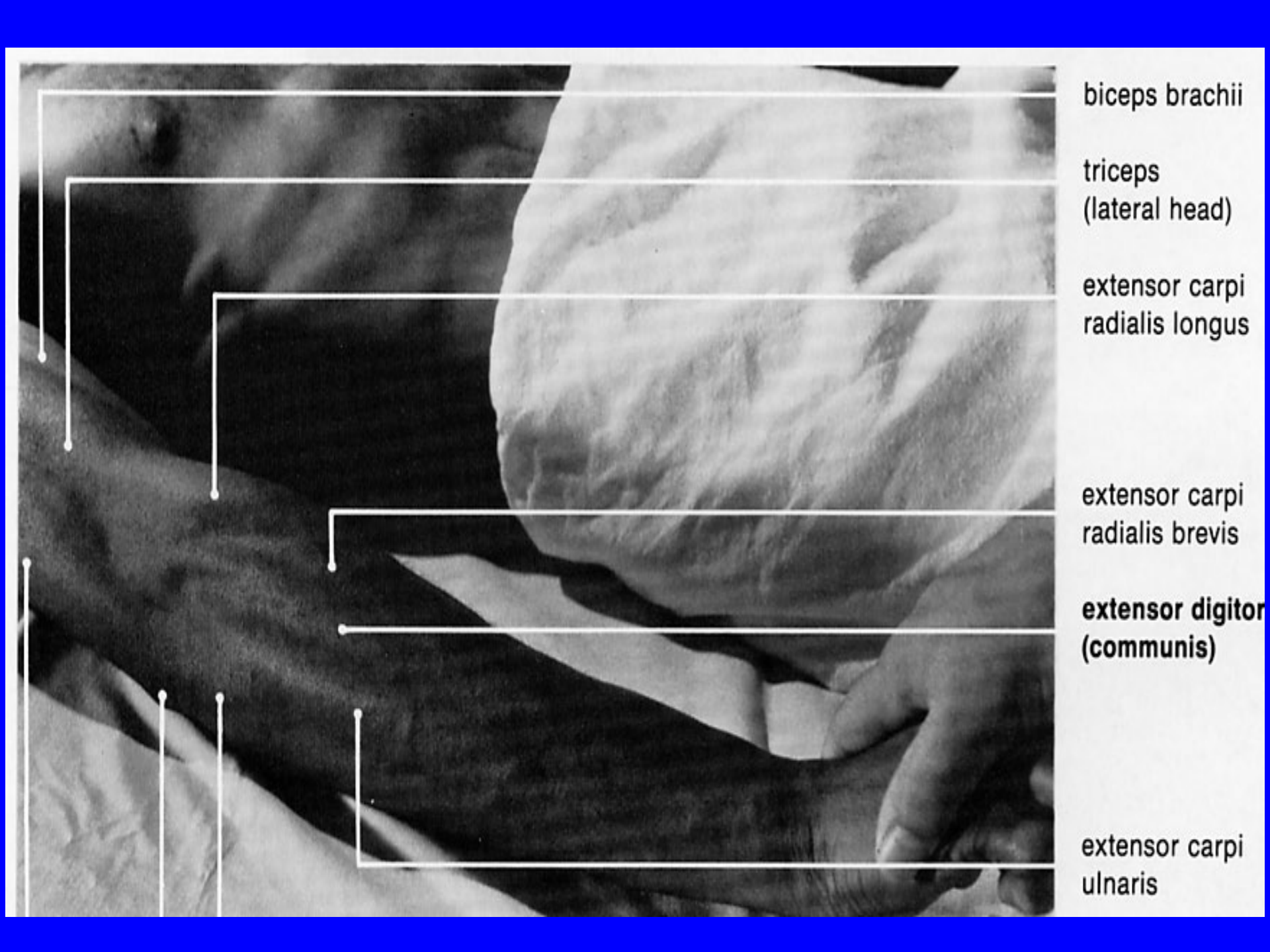
INSERTION: lateral and anterior surface of radius in upper third.

ACTION: supinates forearm.

NERVE: posterior interosseous of radial.

ROOT: C5,C6, C7 mainly C6.





biceps brachii

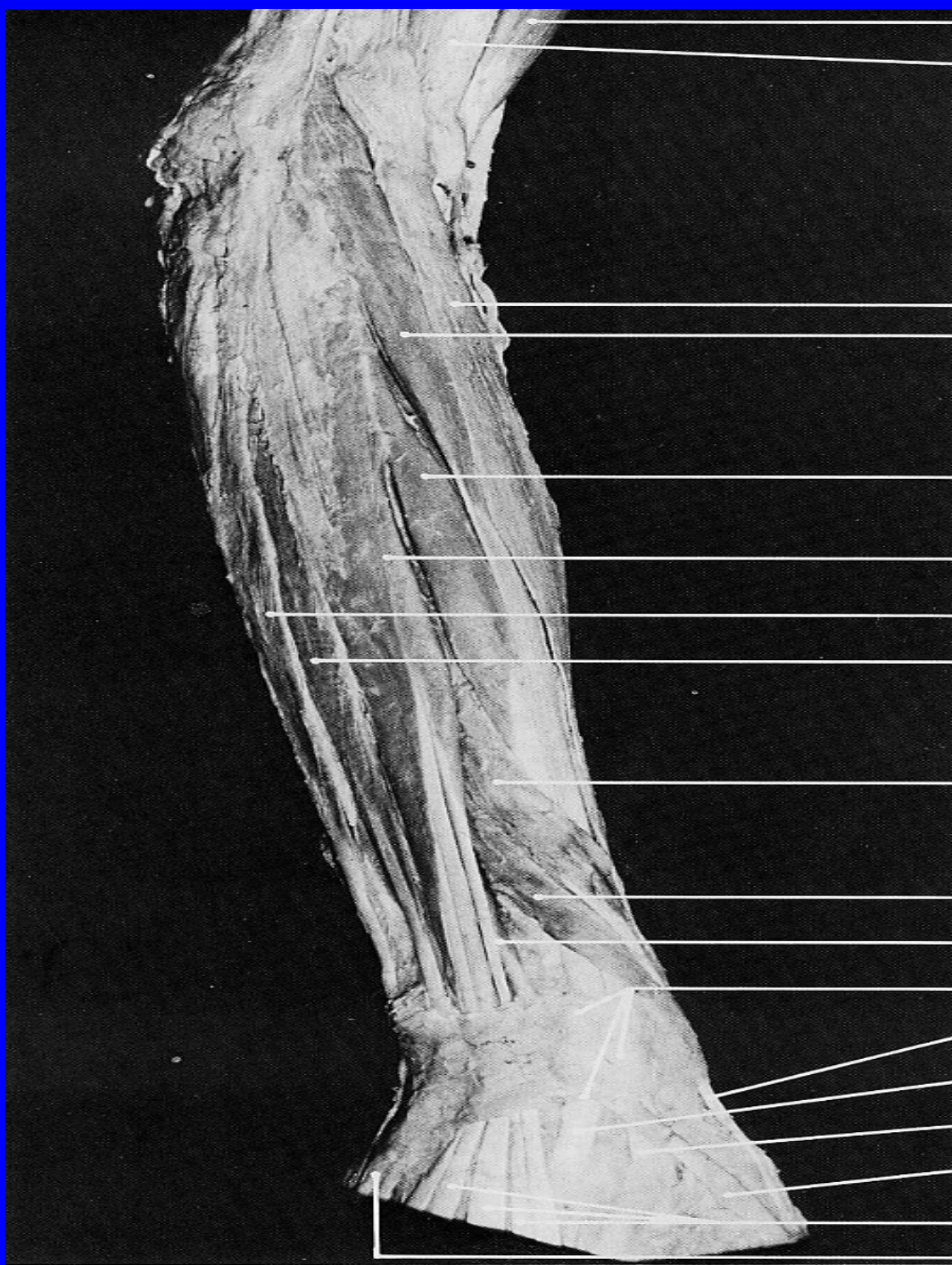
triceps
(lateral head)

extensor carpi
radialis longus

extensor carpi
radialis brevis

extensor digitor
(communis)

extensor carpi
ulnaris



biceps brachii

brachialis

brachioradialis

extensor carpi radialis longus (belly)

extensor carpi radialis brevis (belly)

extensor digitorum (communis) (belly)

extensor carpi ulnaris

extensor digiti minimi

abductor pollicis longus

extensor pollicis brevis (belly)

extensor pollicis longus (tendon, belly)

extensor retinaculum

extensor pollicis brevis (tendon)

extensor carpi radialis brevis (tendon)

extensor carpi radialis longus (tendon)

extensor pollicis longus (tendon)

extensor digitorum (communis) (tendon)

extensor digiti minimi (tendon)

EXTENSOR DIGITORUM

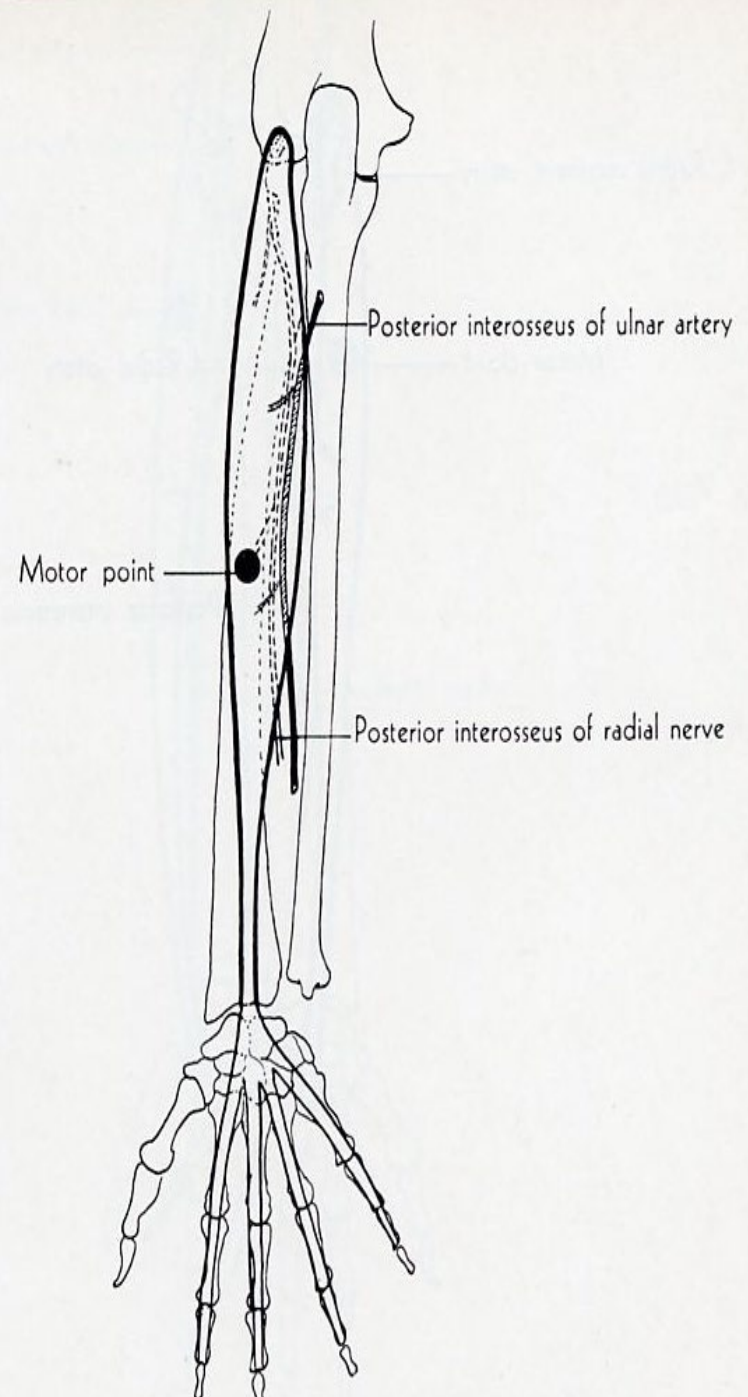
ORIGIN: lateral epicondyle of humerus by common extensor tendon, intermuscular septa.

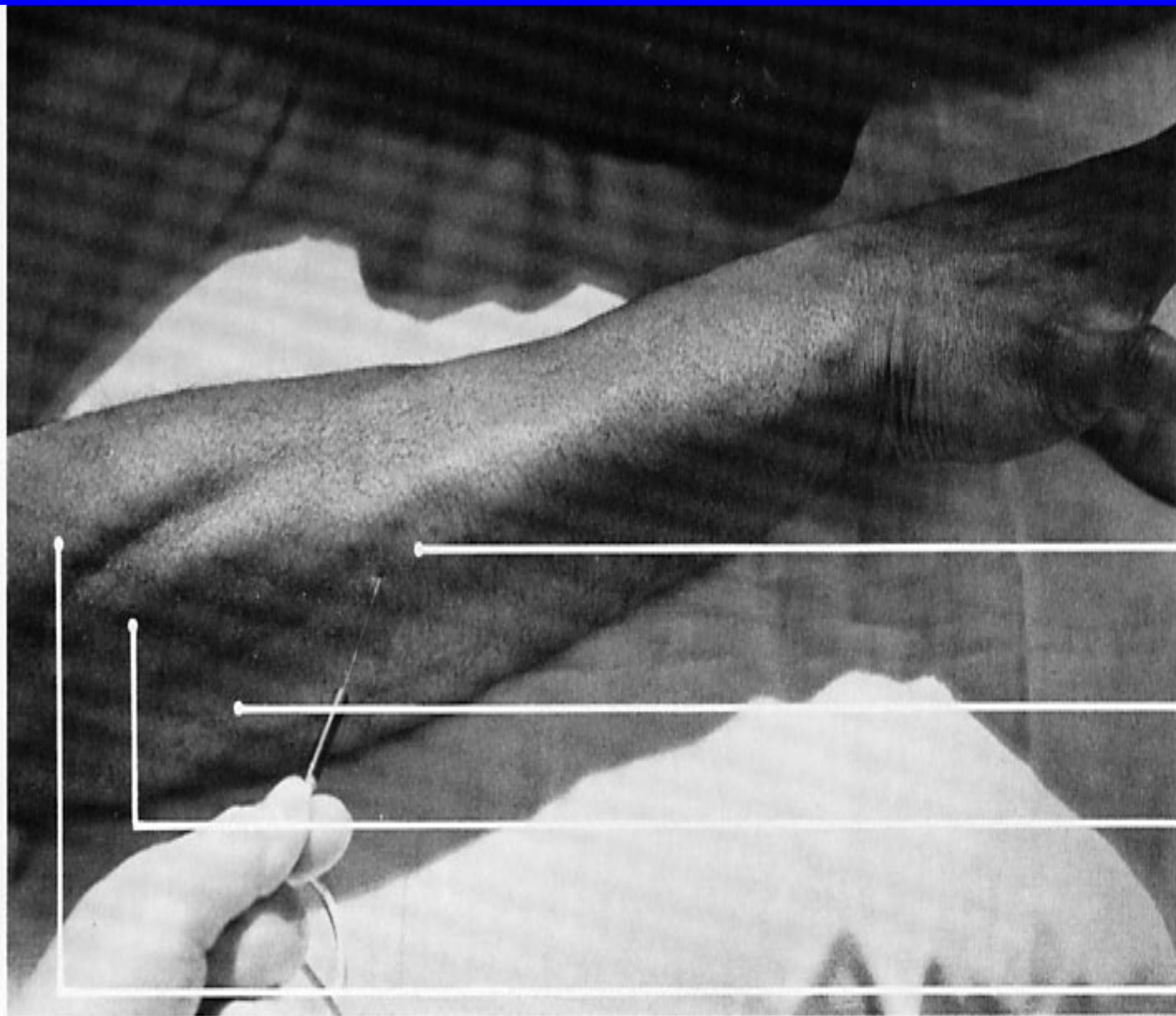
INSERTION: lateral and dorsal surface of phalanges of the medial 4 digits.

ACTION: extend medial 4 digits; assists in wrist extension.

NERVE: posterior interosseous from radial.

ROOT: C7, C8 mainly C7.





extensor digiti minimi

extensor carpi ulnaris

extensor digitorum
(communis)

extensor carpi
radialis longus



brachioradialis

extensor carpi radialis longus (belly)

extensor carpi radialis brevis (belly)

extensor digitorum (communis)

extensor carpi ulnaris

extensor digiti minimi

abductor pollicis longus

extensor pollicis longus (belly)

extensor pollicis brevis (belly)

extensor retinaculum

extensor carpi radialis brevis (tendon)

extensor pollicis brevis (tendon)

extensor pollicis longus (tendon)

extensor carpi radialis longus (tendon)

extensor digitorum (communis) (tendon)

EXTENSOR DIGITI MINIMI

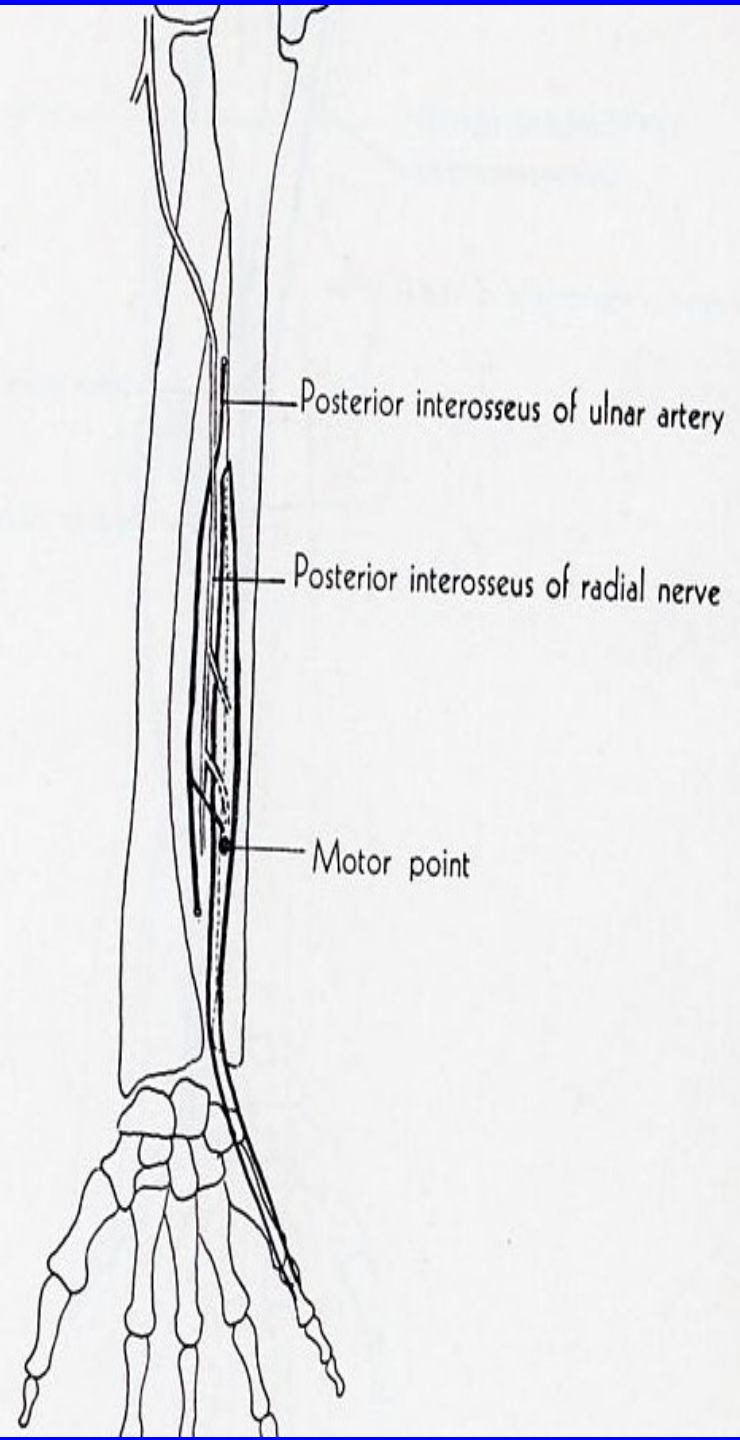
ORIGIN: lateral epicondyle of humerus by common extensor tendon, intermuscular septa.

INSERTION: dorsum of proximal phalanx of fifth digit.

ACTION: extends 5th digit.

NERVE: posterior interosseous from radial.

ROOT: C7, C8 mainly C8.





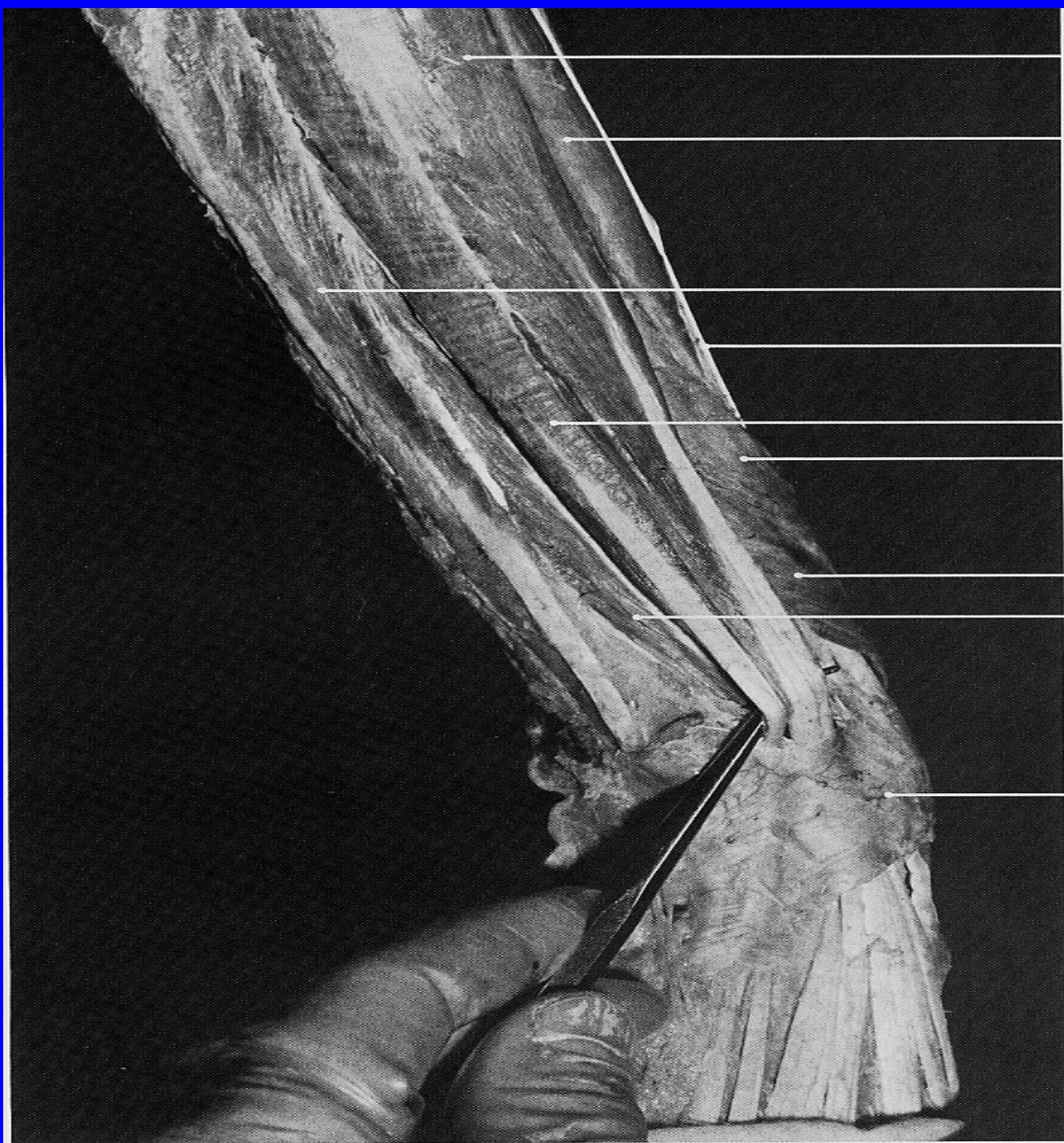
extensor carpi
radialis brevis

extensor carpi
radialis longus

extensor digitorum
(communis)

anconeus

extensor carpi
ulnaris



extensor digitorum
(communis)

extensor carpi radialis brevis

extensor carpi ulnaris

extensor carpi radialis
longus (tendon)

extensor digiti minimi

abductor pollicis longus

extensor pollicis brevis

extensor indicis

extensor retinaculum

EXTENSOR CARPI ULNARIS

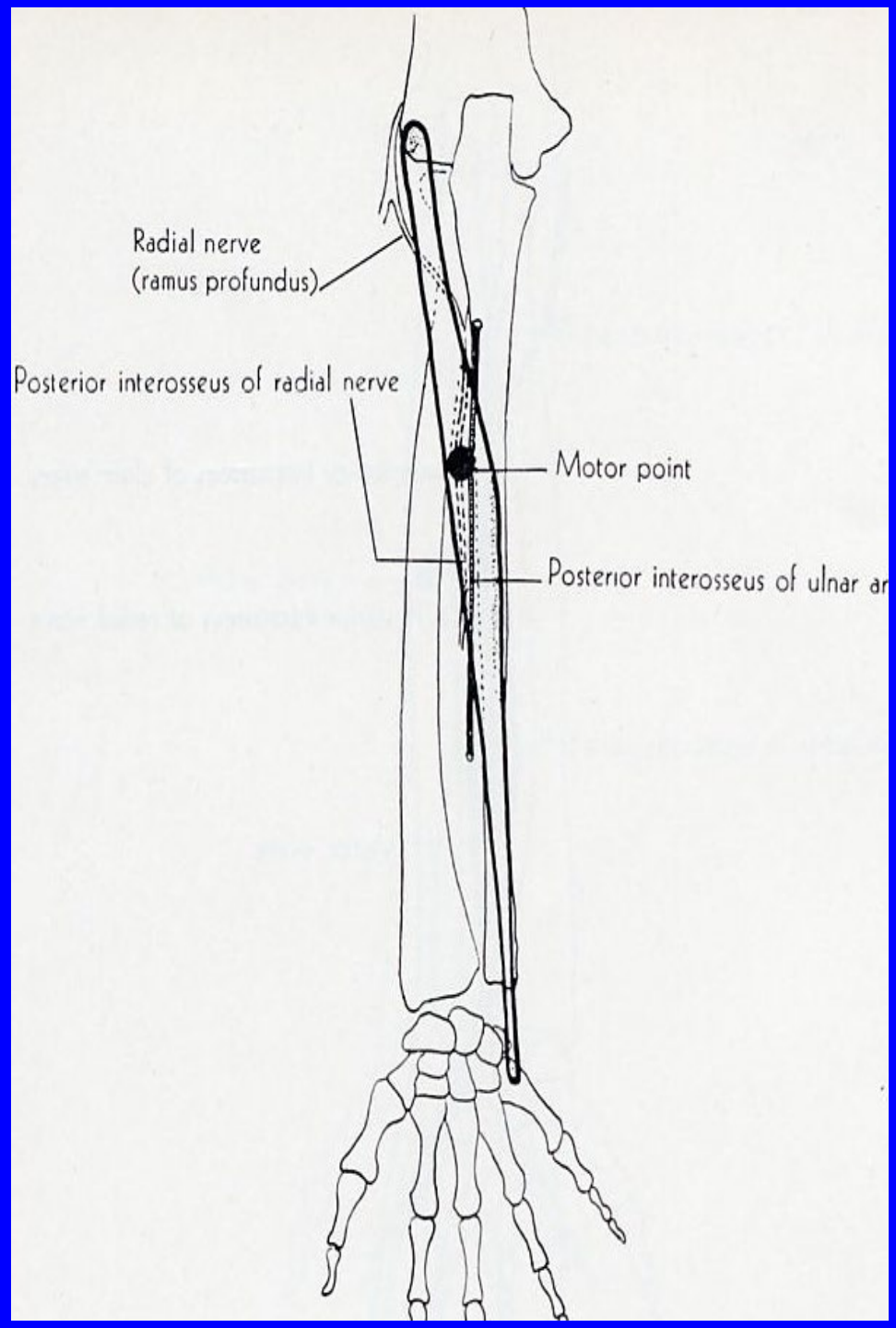
ORIGIN: Common extensor tendon from the lateral epicondyle of humerus, and from posterior border of the ulna.

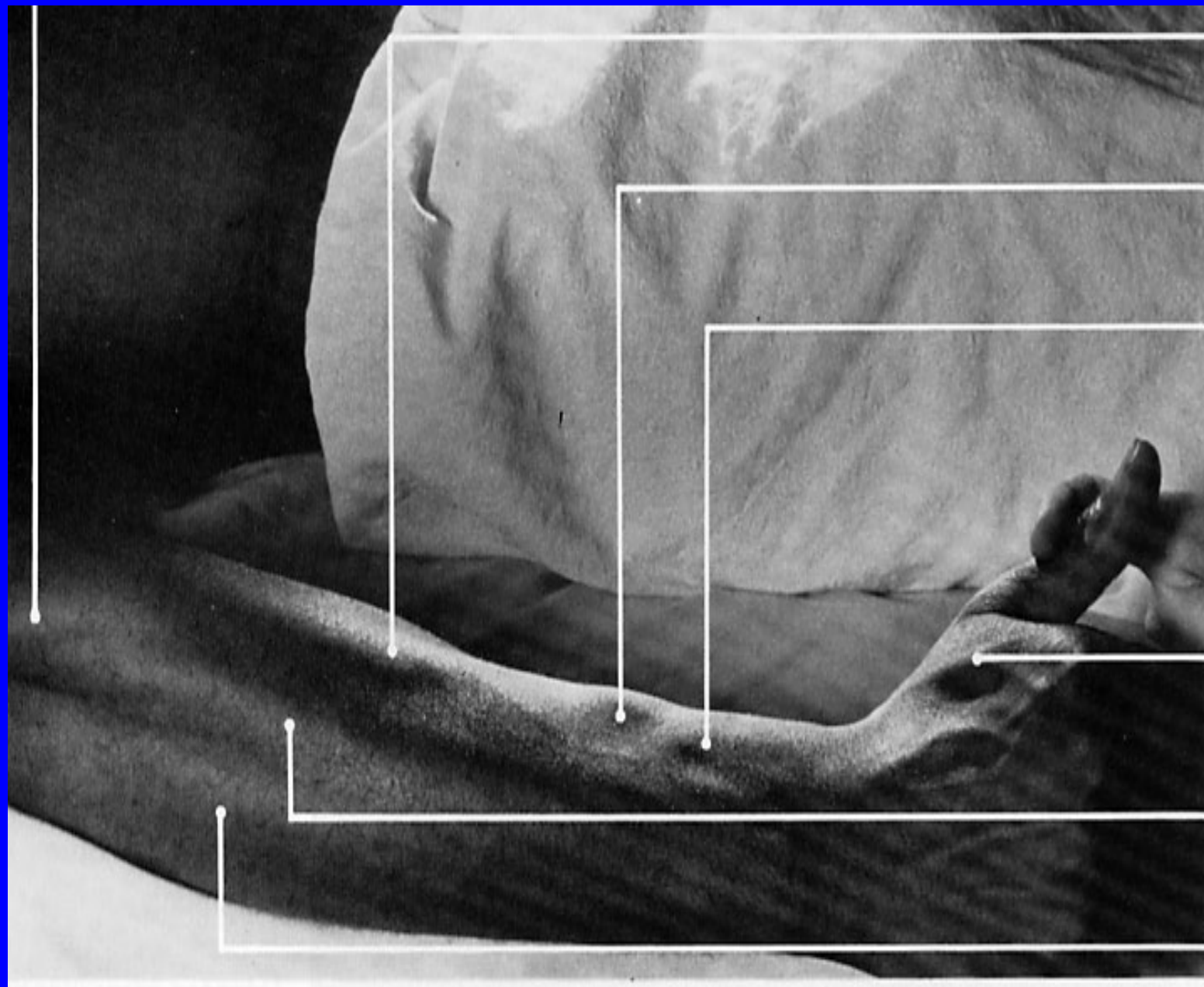
INSERTION: medial side of 5th metacarpal bone.

ACTION: extends wrist, adducts hand

NERVE: posterior interosseous from radial.

ROOT: C7, C8 mainly C8.





extensor carpi
radialis brevis

abductor pollicis
longus

**extensor pollicis
brevis**

first dorsal
interosseous

extensor digitorum
(communis)

extensor carpi uln



brachioradialis

extensor carpi radialis longus (belly)

extensor carpi radialis brevis (belly)

extensor digitorum (communis)

extensor carpi ulnaris

extensor digiti minimi

abductor pollicis longus

extensor pollicis longus (belly)

extensor pollicis brevis (belly)

extensor retinaculum

extensor carpi radialis brevis (tendon)

extensor pollicis brevis (tendon)

extensor pollicis longus (tendon)

ABDUCTOR POLLICIS LONGUS

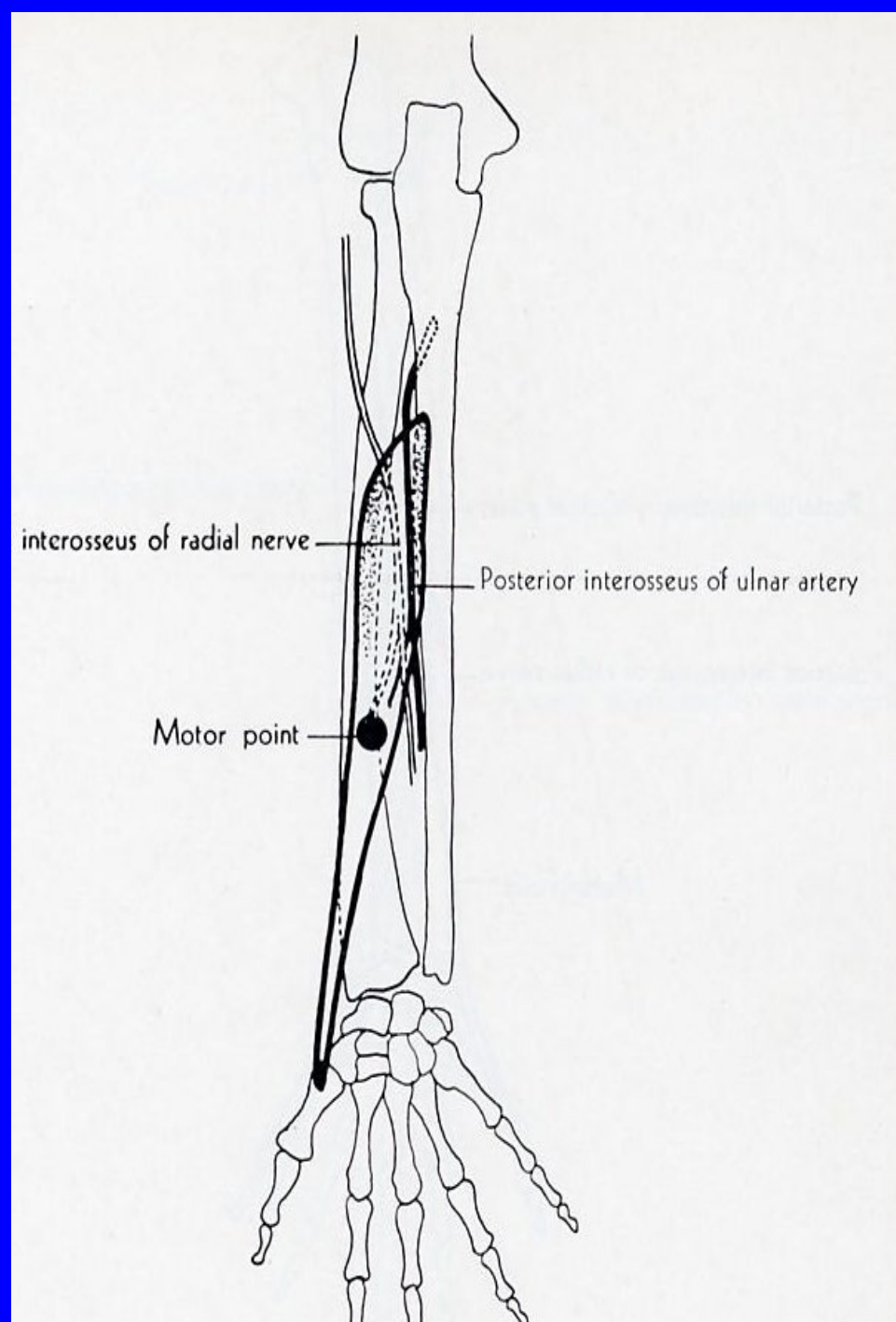
ORIGIN: posterior surface of ulna, interosseous membrane, middle third of posterior surface radius.

INSERTION: radial side of base of 1st metacarpal bone.

ACTION: abducts thumb and wrist.

NERVE: posterior interosseous from radial.

ROOT: C7, C8 mainly C8.



EXTENSOR POLLICIS BREVIS

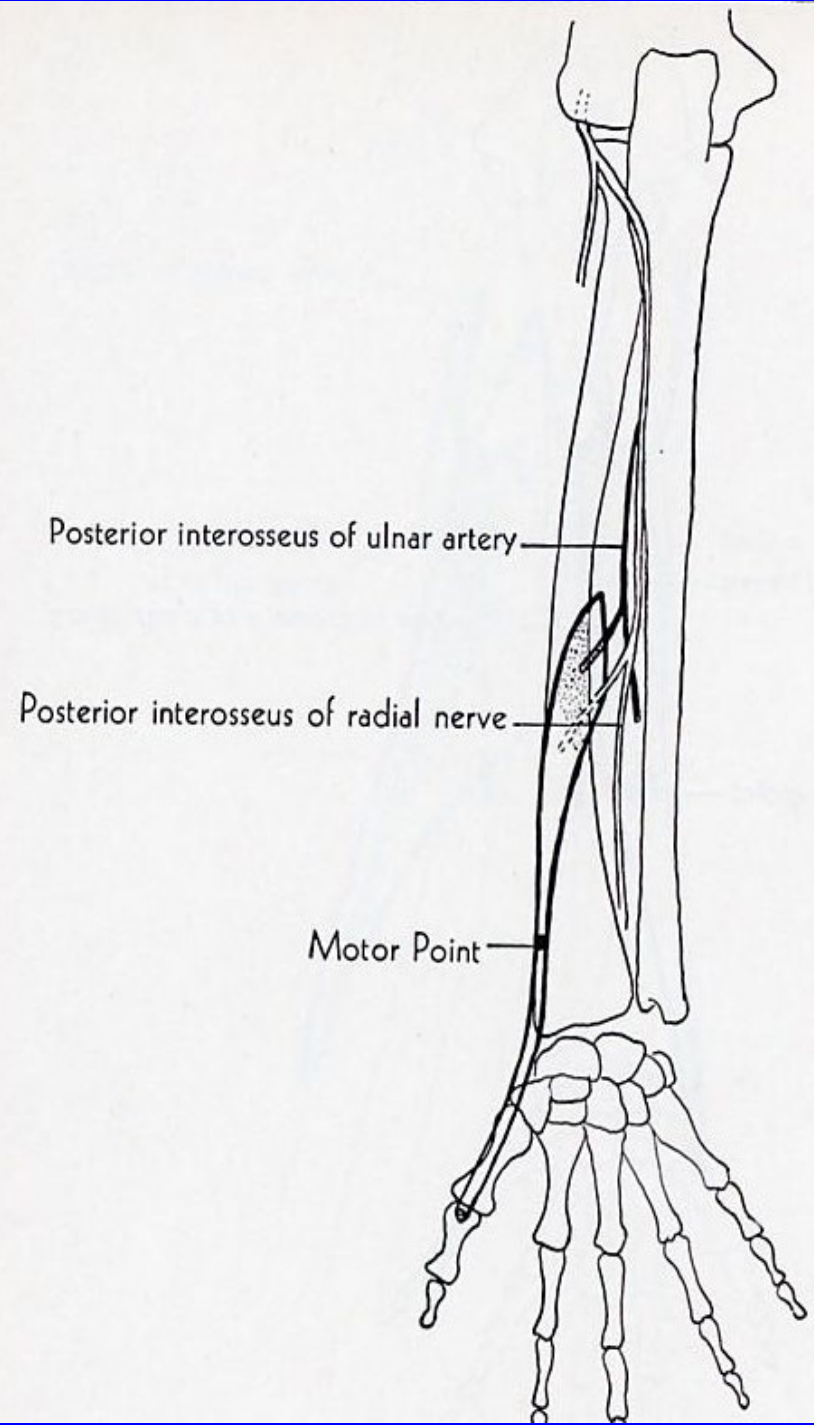
ORIGIN: posterior surface of radius, interosseous membrane.

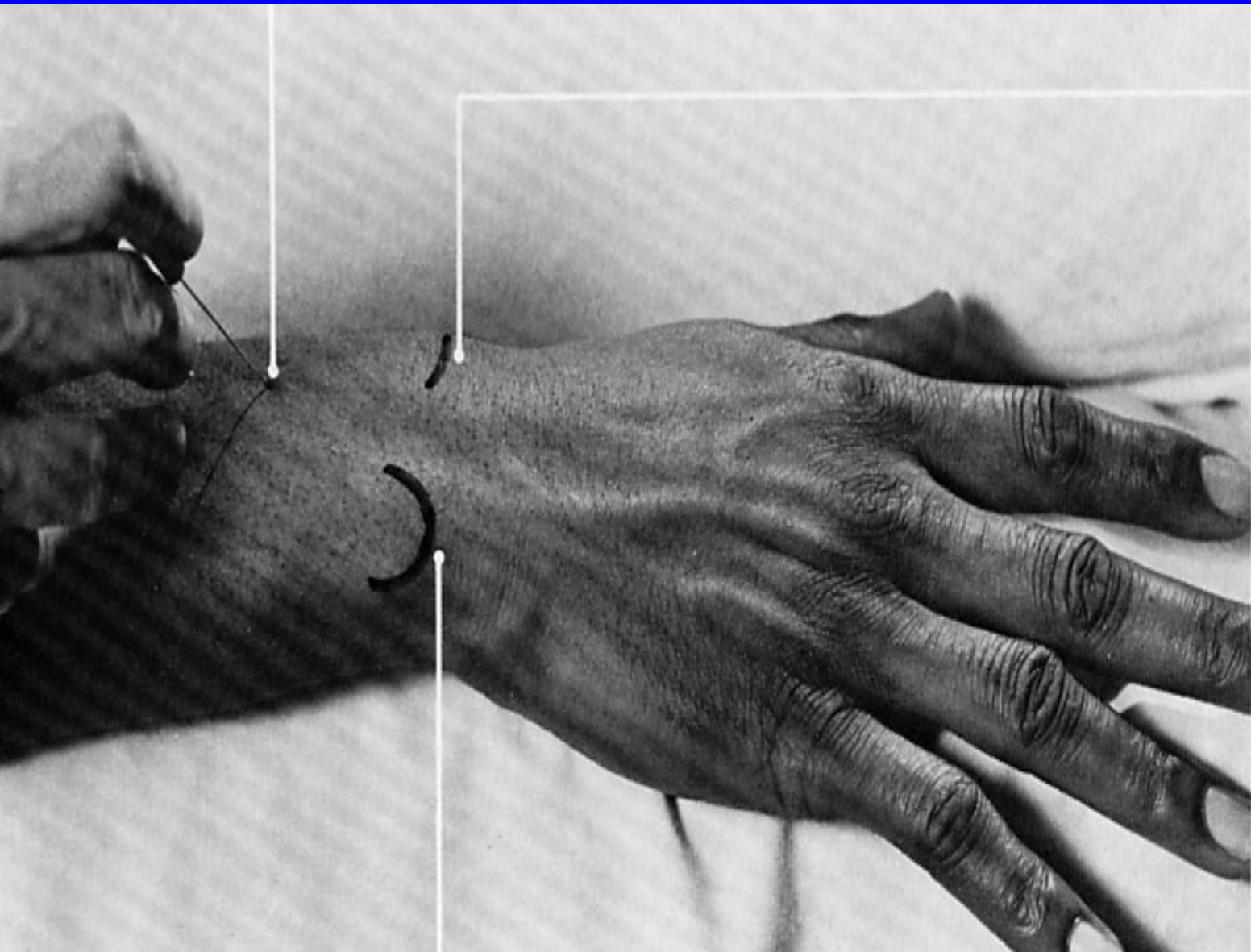
INSERTION: base of proximal phalanx of thumb.

ACTION: extends proximal phalanx of thumb.

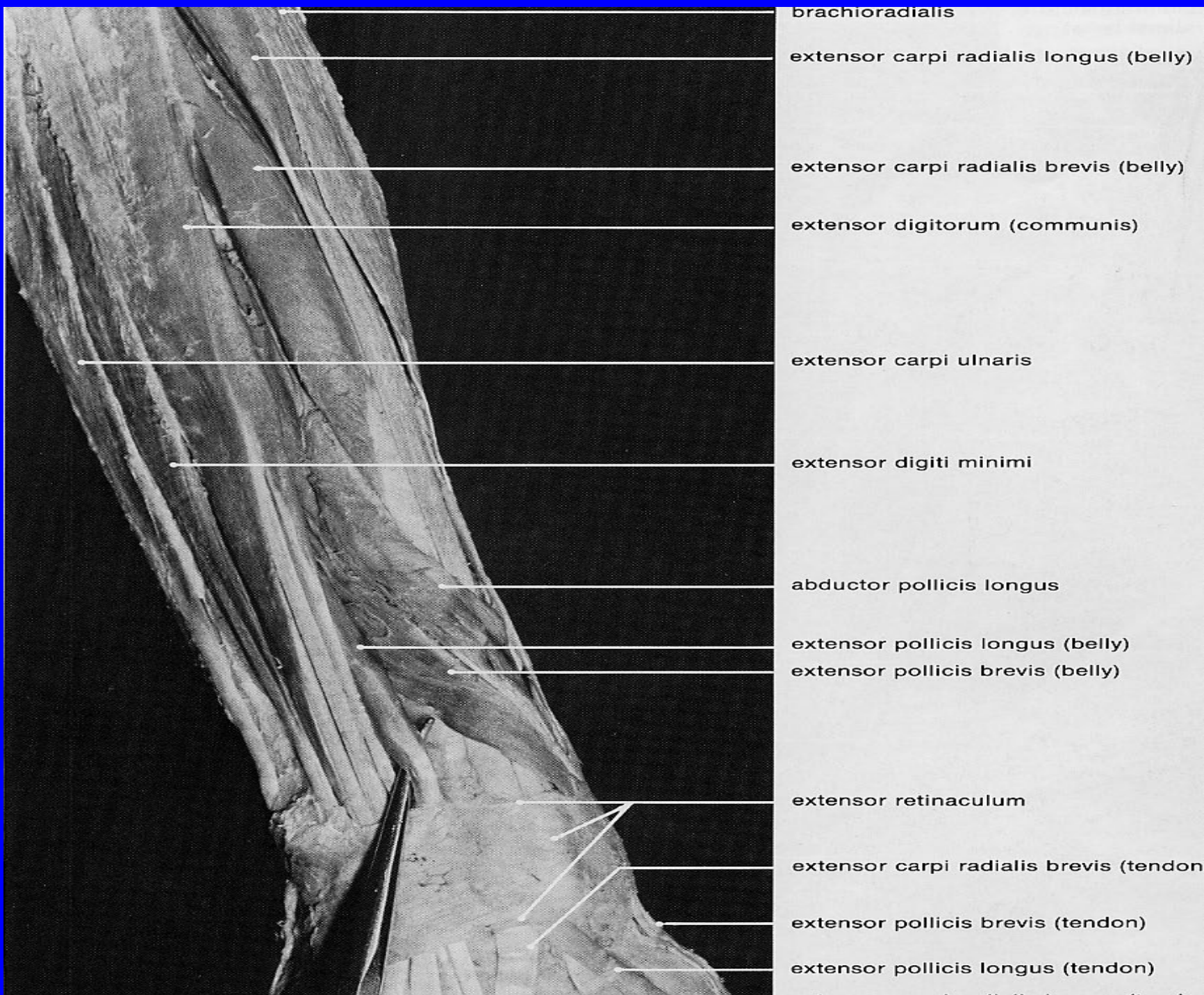
NERVE: posterior interosseous from radial.

ROOT: C7, C8 mainly C8.





base of styloid
process of radius



brachioradialis

extensor carpi radialis longus (belly)

extensor carpi radialis brevis (belly)

extensor digitorum (communis)

extensor carpi ulnaris

extensor digiti minimi

abductor pollicis longus

extensor pollicis longus (belly)

extensor pollicis brevis (belly)

extensor retinaculum

extensor carpi radialis brevis (tendon)

extensor pollicis brevis (tendon)

extensor pollicis longus (tendon)

EXTENSOR POLLICIS LONGUS

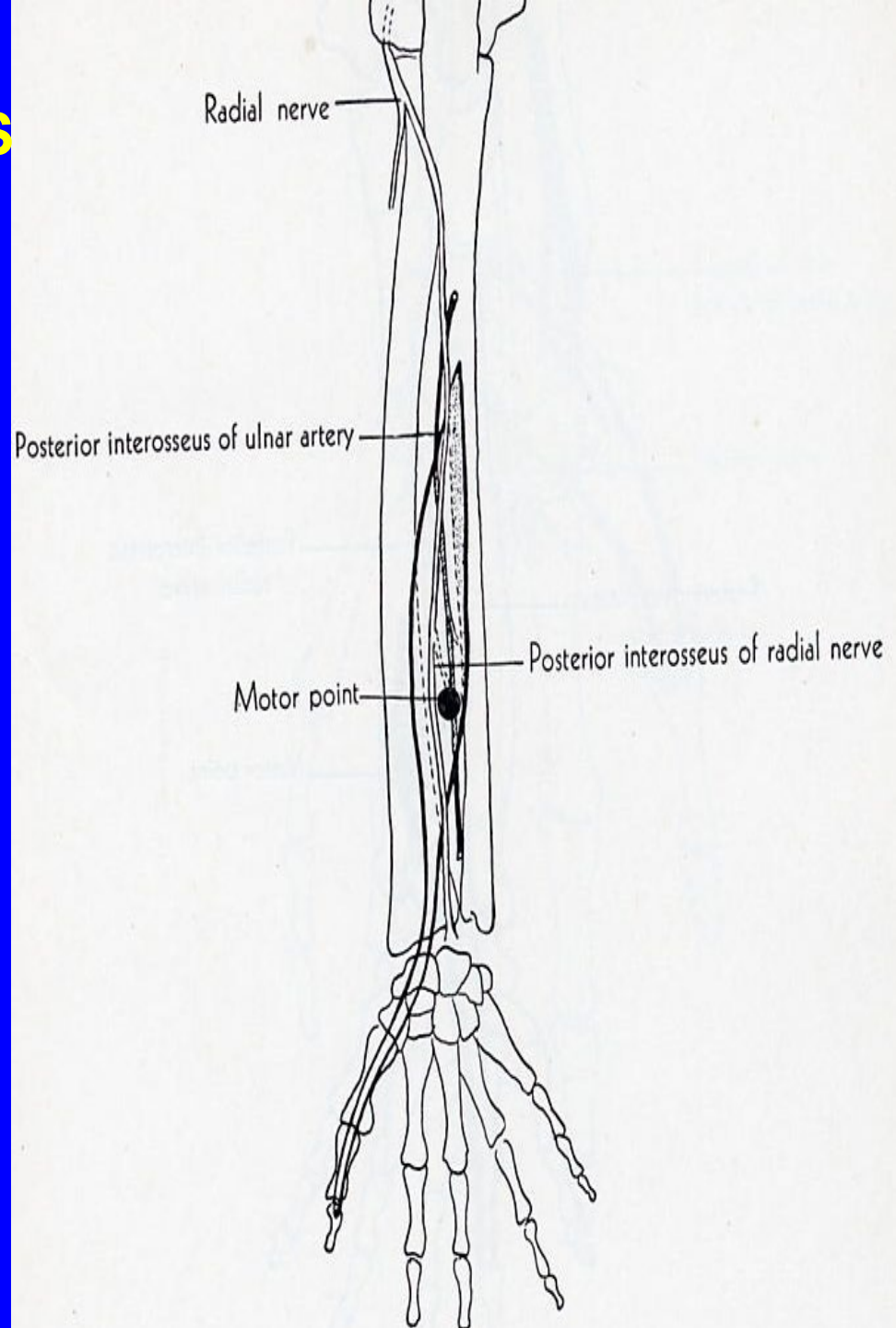
ORIGIN: middle third posterior surface of ulna, interosseous membrane.

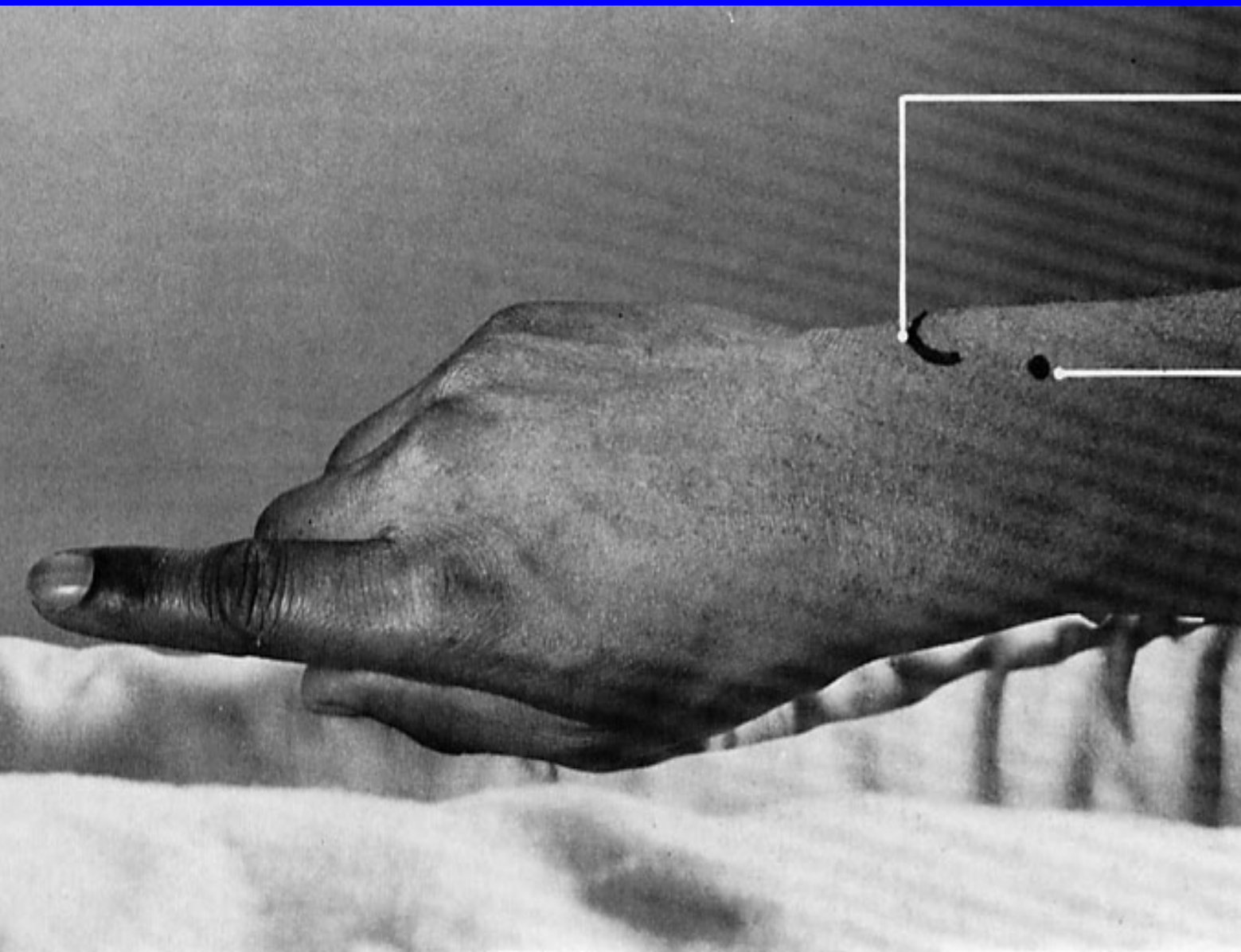
INSERTION: base of distal phalanx of thumb.

ACTION: extends terminal phalanx of thumb.

NERVE: posterior interosseous from radial.

ROOT: C7, C8 mainly C8.

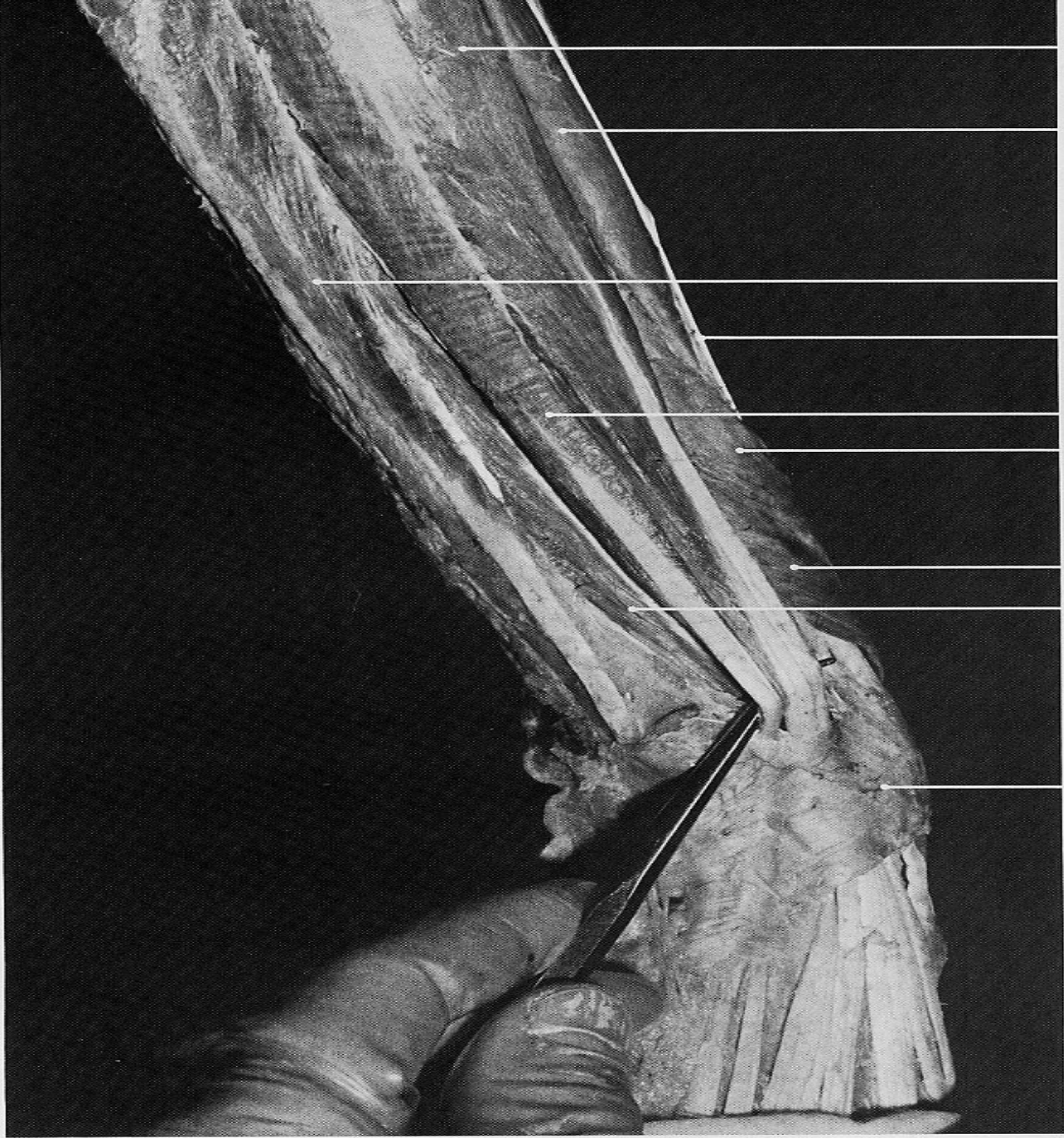




lower border of
head of ulna

pin insertion site
for **extensor indi**

FIGURE 2-56 Extensor indicis.



extensor digitorum
(communis)

extensor carpi radialis brevis

extensor carpi ulnaris

extensor carpi radialis
longus (tendon)

extensor digiti minimi

abductor pollicis longus

extensor pollicis brevis

extensor indicis

extensor retinaculum

EXTENSOR INDICIS

ORIGIN: posterior surface of ulnar, interosseous membrane

INSERTION: Dorsum of proximal phalanx of index finger

ACTION: extends proximal phalanx of index finger

NERVE: posterior interosseous

ROOT: C7, C8 mainly C8

