



OPEN ACCESS

ORIGINAL ARTICLE

# Autonomic components of Complex Regional Pain Syndrome (CRPS) are favourably affected by Electrical Twitch-Obtaining Intramuscular Stimulation (ETOIMS): effects on blood pressure and heart rate

Jennifer Chu,<sup>1</sup> Frans Bruyninckx,<sup>2</sup> Duncan V Neuhauser<sup>3</sup>

<sup>1</sup>Department of Physical Medicine and Rehabilitation, Perelman School of Medicine, University of Pennsylvania, Philadelphia, Pennsylvania, USA  
<sup>2</sup>Physical Medicine and Rehabilitation, Electromyography Laboratories, Leuven University Hospitals, Leuven, Belgium  
<sup>3</sup>Department of Epidemiology and Biostatistics, School of Medicine, Case Western Reserve University, Cleveland, Ohio, USA

**Correspondence to**

Dr Jennifer Chu, Department of Physical Medicine and Rehabilitation, Perelman School of Medicine, University of Pennsylvania, Philadelphia, Pennsylvania, USA; [jchu@etoims.com](mailto:jchu@etoims.com)

Received 14 October 2016  
 Revised 11 April 2017  
 Accepted 31 July 2017  
 Published Online First  
 4 September 2017



CrossMark

**To cite:** Chu J, Bruyninckx F, Neuhauser DV. *BMJ Innov* 2017;**3**:176–187.

**ABSTRACT**

**Introduction** Favourable pain relief results on evoking autonomous twitches at myofascial trigger points with Electrical Twitch Obtaining Intramuscular Stimulation (ETOIMS).

**Aim** To document autonomic nervous system (ANS) dysfunction in Complex Regional Pain Syndrome (CRPS) from blood pressure (BP) and pulse/heart rate changes with ETOIMS.

**Methods and materials** A patient with persistent pain regularly received serial ETOIMS sessions of 60, 90, 120 or  $\geq 150$  min over 24 months. Outcome measures include BP: systolic, diastolic, pulse pressure and pulse/heart rate, pre-session/ immediate-post-session summed differences (SDPPP index), and pain reduction. His results were compared with that of two other patients and one normal control. Each individual represented the following maximal elicitable twitch forces (TWF) graded 1–5: maximum TWF2: control subject; maximum TWF3: CRPS patient with suspected ANS dysfunction; and maximum TWF4 and TWF5: two patients with respective slow-fatigue and fast-fatigue twitches who during ETOIMS had autonomous twitching at local and remote myotomes simultaneously from denervation supersensitivity. ETOIMS results between TWFs were compared using one-way analysis of variance test.

**Results** The patients showed immediate significant pain reduction, BP and pulse/heart rate changes/reduction(s) except for diastolic BP in the TWF5 patient. TWF2 control subject had diastolic BP reduction with ETOIMS but not with rest. Linear regression showed TWF grade to be the most significant variable in pain reduction,

more so than the number of treatments, session duration and treatment interval. TWF grade was the most important variable in significantly reducing outcome measures, especially pulse/heart rate. Unlike others, the TWF3 patient had distinctive reductions in SDPPP index.

**Conclusions** Measuring BP and pulse/heart rate is clinically practical for alerting ANS dysfunction maintained CRPS. SDPPP index ( $\geq 26$ ) and pulse/heart rate ( $\geq 8$ ) reductions with almost every ETOIMS treatment, plus inability to evoke autonomous twitches due to pain-induced muscle hypertonicity, are pathognomonic of this problem.

**INTRODUCTION**

Complex regional pain syndrome (CRPS) appears related to autonomic nervous system (ANS) dysfunction, and when comorbid with persistent myofascial pain (MP) makes MP management difficult. ANS abnormality detection usually requires complicated, costly and refined tests necessitating a clinical need for innovative methods for outpatient persistent pain management. Electrical Twitch-Obtaining Intramuscular Stimulation (ETOIMS), a non-invasive surface electrical stimulation of motor points, is such a system as it can be safely and efficaciously used repetitively on a long-term basis on patients with persistent pain. ETOIMS system can provide pain relief accompanied by reductions in ANS controlled blood pressure (BP) and pulse/heart rate.<sup>1 2</sup>



**AIM**

The study aimed to document the presence of ANS dysfunction in CRPS from BP and pulse/heart rate changes associated with ETOIMS.

**CASE HISTORY**

A male construction worker in his mid-40s presented for ETOIMS management of persistent pain. The persistent pain of 4 years' duration was in the right shoulder, neck and low back, with headaches that began after being accidentally struck in the right shoulder with an object weighing ~130 kg. At various times, the pain is burning, aching, shooting, stabbing, throbbing or sharp with tingling and numbness, and he was protective of his right arm.

He had no response to multiple brachial plexus nerve blocks, right rotator cuff repair, numerous pharmaceuticals (anti-inflammatories, antidepressants, anticonvulsants, pain medications), physical therapy (PT) and occupational therapy (OT). Right brachial plexus neurolysis provided significant pain relief, but the persistent pain remained at an average of 3/10, with pain exacerbations to a verbal pain score of 9/10 with any unexpected forced right arm movement or forceful contact to the right arm. Failing further improvement, at the time of presentation for ETOIMS, he had discontinued all other treatments and medications except for an anti-inflammatory medication as needed. He had never before been diagnosed as having pain due to ANS dysfunction.

No contraindications for electrical stimulation<sup>3</sup> existed in this patient, and these included systemic/autoimmune/malignant diseases, pacemakers, angina, infections, seizures, bleeding, profound psychiatric problems, skin scarring, obesity, central pain, severe sympathetically maintained pain/small-fibre neuropathy, multiple failed spinal surgeries, multiple narcotics use or persistent pain in the 8–10/10 range.<sup>2</sup>

Physical examination revealed a maximum active range of motion (ROM) of 110° for right shoulder flexion and abduction with significant movement pain. Due to his neck and low back pain, he also showed bilateral limitation of active ROM of the cervical spine for neck rotation, straight leg raise testing (45°) and FABERE (hip flexion, abduction, and external rotation), which were limited due to low back pain resulting in muscle hypertonicity of spine, pelvic and lower limb muscles.<sup>1,2</sup> There was significant paraspinal hypertonicity, more on the right, from neck to lower back especially in the thoracic region. Motor and sensory examinations were normal and there were no upper motor neuron changes.

Diagnostic imaging consisted of (1) cervical spine MRI scan, which revealed C3–C7 degenerative disc disease, neural foraminal narrowing and congenital spinal stenosis, worse at C2–C3 and C6–C7; (2) right shoulder MRI scan, which showed supraspinatus tendinopathy/impingement; (3) right acromioclavicular

joint MRI scan, which showed degenerative changes; (4) right brachial plexus, scapula and brain MRI scans, which were normal; and (5) postdecompression surgery brachial plexus ultrasound, which showed perineural scarring from proximal traction-fixation plexopathy.

**MATERIALS AND METHODS**

Although the ETOIMS treatments were routinely covered by health insurance as neuromuscular re-education PT, a lengthy waiting time was usually needed to receive pre-authorisation from workman compensation programme before treatment could begin, especially since his case was already 4 years old. The patient understood that he might not receive adequate numbers of treatment sessions to be able to reach to the stage of autonomous twitching, the goal in ETOIMS for optimal pain relief. The patient opted to self-pay \$200/hour treatment sessions and his budget allowed him 3 times/week, 1 hour sessions.

ETOIMS was applied using high-voltage, constant-current stimulator with the bipolar probe to stimulate the myofascial trigger points (MTrPs) motor points.<sup>1,2</sup> The muscles consistently treated were the bilateral paraspinal muscles from C2–S1 levels, trapezius (C3, C4), latissimus dorsi (C6–C8), gluteus maximus (L5–S1) and adductor magnus (L2–S1).<sup>1,2</sup> The dominant roots in these muscles are shown in parentheses. To be able to effectively search and adequately stimulate the MTrPs, he was treated supine, prone, right and left side-lying, sitting and in slightly flexed standing positions with every treatment. This necessitates the treating physician to move around the treatment table and have an appropriate treatment angle.

The corresponding author trained the patient to self-treat without additional charges so he could perform a warm-up to reduce some of the hypertonicity prior to professional treatments.<sup>1,2</sup> Instructions were given to prevent undesirable side effects of treatment/post-treatment pain. This included lifting the stimulation probe off the skin every two to four twitches to prevent unnecessary direct stimulation of muscle at sites where MTrPs cannot be detected especially at the reference electrode. He routinely self-measured and recorded the mean of three BP and pulse/heart rate (P) readings pre-treatment/post-treatment sitting on the same chair with steady respiration.

From day 1, he self-treated for 60 min using 500  $\mu$ s pulse width, 30–40 mA stimulation strength at 1.5 Hz to elicit minimum TWF2 in treated muscles. In spite of a warm-up treatment, it took the corresponding author 71 ETOIMS treatments before a few (1–3) weak force, sporadic, autonomous twitches could be elicited in the right triceps, right dorsal forearm and finger extensor muscles supplied by the C6–C7 nerve roots. The stimulation parameters were carefully adjusted according to his pain tolerance until the average parameters acceptable to him were 500  $\mu$ s, 60–80 mA at 2 Hz. This was

able to evoke partial TWF3 twitches at MTrPs with denervation supersensitivity (DS) in the following root(s) dominant muscles: deltoid (C6), wrist and finger extensors (C6–C7), triceps (C7), rectus femoris (L3, L4), tensor fasciae latae (L5) and hamstrings (L5, S1). TWF3 twitch elicitation was not possible in trapezius (C4) and gluteus maximus (S1) muscles even when the stimulation was increased to 1000  $\mu$ s–80 mA–3 Hz combination for a few seconds in the right trapezius, where he was less pain-sensitive.

Twitch force (TWF) grades 1–5 include the following characteristics: TWF1: superficial MTrPs stimulation without joint movement effects produces weak feedback on the probe. TWF2: capable of non-antigravity movements such as shaking, rocking and rolling of the joint, which treated muscle crosses over. This indicated stimulation of MTrPs in deep muscles apposed to bone and joints. TWF2 is the minimum needed for pain relief, but in patients with pain they are difficult to find because of muscle hypertonicity and accompanying allodynia.<sup>1,2</sup> It is also the maximum elicitable TWF in normal muscles as shown later with studies on a normal subject. With normal muscles, evoked twitches from MTrPs are painless and provide equal force feedback on both electrodes simultaneously. Both electrodes can easily elicit such twitches immediately since they are easily found without search efforts. With DS, force feedback from the other electrode not on the MTrP seemed extinguished since the TWF is very strong on the electrode overlying MTrP with DS. TWF3 produces vigorous antigravity movements of the limb due to spread of stimulation to many MTrPs with DS resulting in full contraction of muscle(s) simultaneously. A pre-fatigue phenomenon of sudden rapid-firing twitches occurs that can proceed to autonomous twitching that fatigue slowly (TWF4) or rapidly (TWF5). TWF4 and TWF5 provide the most effective pain/discomfort relieving results through active exercise derived from many forceful contractions associated with local and remote autonomous twitches. Muscles that allow TWF4 and TWF5 elicitation indicate better prognosis for pain relief since they are less hypertonic compared with muscles where only TWF1–3 can be elicited. The goal of ETOIMS is to normalise DS through elicitation of local and remote autonomous twitches that exercise, fatigue irritable MTrPs and improve circulation.<sup>1,2</sup>

The patient showed twitches suggestive of pre-fatigue phenomenon that did not erupt into autonomous twitches, and thus the treatment plan was intensified to reduce muscle hypertonicity to facilitate twitch elicitation. The patient self-treated on the days between the professional 3 times -per-week treatments. He was advised to add whirlpool therapy prior to ETOIMS for a possible effect on reducing muscle hypertonicity. He was adverse to taking medications such as gabapentin regularly since his preference was to control his pain daily with ETOIMS than

with pharmaceutical methods. He then had a planned minor surgery, and post-surgery he was unable to receive ETOIMS for 1 week. He did not have any treatments after the surgery so the ETOIMS protocol was not disrupted.

While receiving ETOIMS he undertook more numbers of treatments with longer duration sessions indicating that self-reported pain levels are reliable.<sup>1,2</sup> He also came voluntarily for professional and self-treatments regularly, which demonstrated that he needed the treatments for daily pain relief.

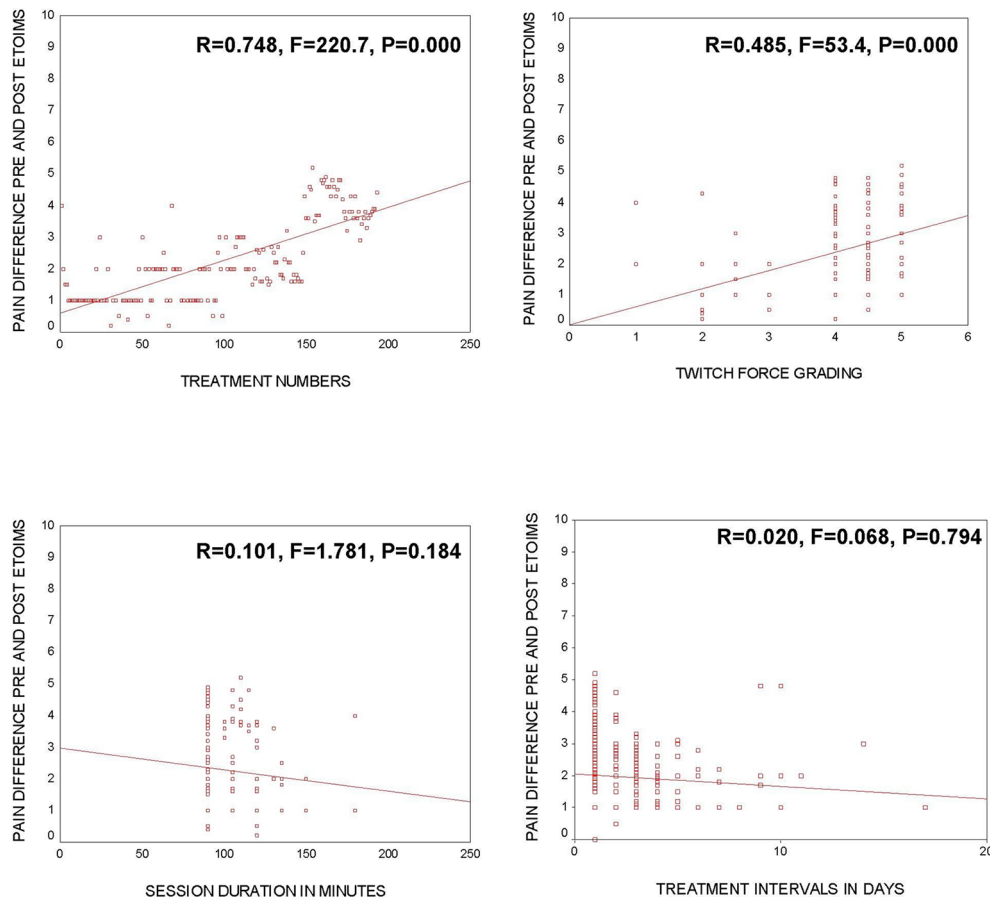
He made a decision to stop ETOIMS treatments after the surgery when his pain peaked to 5/10. He knew that with the increase in pain post-surgery, he would not be able to tolerate the stimulus intensities that he had been used to. Since there were no autonomous twitches even with intensive treatments, he felt he needed to seek other non-pharmaceutical treatments. Before stopping ETOIMS treatments, he had received a total of 202 sessions, and the right shoulder ROM had improved to 150° for abduction and flexion with less pain, but there was still pain aggravation to 9/10 for movements beyond that range.

To fully understand TWF3 patient's inability to progress to eliciting autonomous twitches even with intensive treatments, we compared his results with 202 consecutive data of a 64-year-old man with persistent lower back pain with TWF5 capacity,<sup>1</sup> 202 data of an 83-year-old man with TWF4 with persistent headaches<sup>2</sup> and 202 data from the pain-free corresponding author who participated as a convenient control subject. To ascertain test results were related to ETOIMS intervention, the corresponding author also measured 202 pre/post rest-sleep values where the intervention was lying down supine (figures 1 and 2).

## RESULTS AND ANALYSIS

Statistical analysis was performed with SPSS V.12. Pre-ETOIMS and immediately after ETOIMS, changes in BP and pulse/heart rate of our patient with TWF3 were compared with three other individuals and analysed with one-way analysis of variance, using posthoc Bonferroni's correction. We used this method of analysis since we needed to understand the basis of ETOIMS-related large reductions in BP and pulse/heart rate in a TWF3 patient. This patient's results were compared with rest condition without ETOIMS-induced twitches in a normal control subject, ETOIMS-induced low force twitches in the same normal control, and patients who had the ability to elicit TWF4 and TWF5 from presence of DS.

Pre-treatment/immediatepost-treatment changes in systolic blood pressure, diastolic blood pressure, pulse pressure and pulse/heart rate (P) were summed after each treatment for an index termed SDPPP (summed differences of Systolic–Diastolic–Pulse Pressure–Pulse pre and post- ETOIMS).



**Figure 1** Linear regressions for treatment numbers and SDPPP indices in various twitch forces. ETOIMS (Electrical Twitch-Obtaining Intramuscular Stimulation); SDPPP indices (summed Systolic–Diastolic–PulsePressure–Pulse differences pre and post -ETOIMS).

In [table 1A](#), there were large reductions in SDPPP index, with TWF3–5 contributed primarily by reductions in systolic BP and pulse/heart rate. Changes were most marked in TWF3. The normal control subject with TWF2 had minimal changes in SDPPP index after ETOIMS and rest.

In [table 1B](#), multiple comparisons of TWF0 results with TWF2–5 showed TWF0 with higher SDPPP index compared with TWF2 results ( $p < 0.05$ ) due to diastolic BP increase during rest. Comparison with TWF3 showed marked reductions in all parameters measured in TWF3. Comparison with TWF4 showed significant reduction of all parameters in TWF4 except pulse pressure. Comparisons with TWF5 showed similar reductions in TWF5 except for diastolic BP.

In [table 1C](#), multiple comparisons of parameters that relate to SDPPP index showed TWF2 had significantly higher SDPPP index compared with TWF3 from the reduction of almost all parameters with TWF3 except diastolic BP. Comparison with TWF4 showed significant reductions in TWF4 for systolic BP and pulse/heart rate reductions but not diastolic BP. Comparison with TWF5 showed significant reductions in most parameters except for systolic BP in TWF5. TWF4 and TWF5 did not show differences except that TWF4 had significantly lower diastolic BP.

[Table 2](#) shows the Spearman correlations, which showed an increase in heart rate/pulse with increasing numbers of treatments for TWF0 and TWF2, but TWF2 showed a negative correlation between number of treatments and systolic and diastolic blood pressure.

The TWF3 patient had to take more treatments due to increasing pain, whereas the TWF4 and TWF5 patients had pain score reduction with increasing treatment numbers. Only the TWF3 patient had no correlation of pulse/heart rate to the number of treatments. TWF4 and TWF5 patients showed a negative correlation of number of treatments to pulse/heart rate.

## DISCUSSION

Our patient had never been diagnosed previously with CRPS. All the diagnostic studies were primarily that of imaging studies searching for anatomical pathologies in the spine and in major nerves/plexus, whereas his persistent pain was from a combination of involvement of multiple-level spondylotic radiculopathies and autonomic neuropathy, as shown by his ETOIMS treatment results. We also highlight that reductions in BP and pulse/heart rate of such magnitude do not occur in a normal individual receiving ETOIMS. Usually, systolic BP increases significantly and proportionally to workload increase during exercise tests in healthy adults.<sup>4</sup>



## MEDICAL DEVICES

**Table 1A** Pre-ETOIMS and immediate-post-ETOIMS blood pressure and pulse/heart rate changes with various twitch forces 0–5

	TWF0, control subject resting	TWF2, control subject Treated	TWF3 Treated	TWF4 Treated	TWF5 Treated
<b>SBPΔ</b>					
Mean±SD	1±7	1±7	-8±6	-3±8	-2±7
(Range)	(-20 to 18)	(-18 to 16)	(-26 to 15)	(-23 to 23)	(-21 to 15)
95% CI	0 to 2	-2 to 0	-9 to -8	-5 to -2	-3 to -1
<b>DBPΔ</b>					
Mean±SD	1±4	-2±4	-3±4	-3±5	0±5
(Range)	(-9 to 12)	(-13 to 8)	(-12 to 9)	(-16 to 10)	(-11 to 13)
95% CI	0 to 1	-2 to -1	-3 to -2	-4 to -2	0 to 1
<b>PPΔ</b>					
Mean±SD	0±6	-1±5	-6±6	-2±9	-2±6
(Range)	(-17 to 19)	(-15 to 13)	(-21 to 10)	(-19 to 10)	(-17 to 17)
95% CI	-1 to 0	0 to 0	-7 to -5	-3 to 0	-3 to -1
<b>PulseΔ</b>					
Mean±SD	0±3	0±4	-7±7	-5±4	-4±6
(Range)	(-8 to 10)	(-15 to 12)	(-23 to 15)	(-16 to 11)	(-22 to 12)
95% CI	0 to 0	0 to 0	-8 to -6	-5 to -4	-5 to -3
<b>SDPPP</b>					
Mean±SD	1±15	-3±12	-25±13	-12±17	-8±15
(Range)	(-34 to 37)	(-37 to 28)	(-54 to 14)	(-52 to 43)	(-50 to 33)
95% CI	0 to 3	-5 to 1	-26 to -23	-14 to -10	-10 to -5

Δ, Difference; DBP, diastolic blood pressure; ETOIMS, electrical twitch-obtaining intramuscular stimulation; PP, pulse pressure; SBP, systolic blood pressure; SDPPP, sum of pre/immediate-post-ETOIMS changes in systolic, diastolic, pulse pressure and pulse/heart rate; TWF, twitch force.

**Table 1B** Multiple comparisons of blood pressure/pulse changes between various twitch force groups compared with that obtained with complete rest

	TWF0 vs TWF2	TWF0 vs TWF3	TWF0 vs TWF4	TWF0 vs TWF5
<b>SBPΔ</b>				
Mean±SE	1±0.7	9±0.7	4±0.7	3±0.7
(p)	0.639	<b>0.000</b>	<b>0.000</b>	<b>0.002</b>
95% CI	0 to 3	7 to 11	2 to 6	1 to 5
<b>DBPΔ</b>				
Mean±SE	3±0.4	3±0.4	4±0.4	0±0.4
(p)	<b>0.000</b>	<b>0.000</b>	<b>0.000</b>	1.000
95% CI	2 to 4	3 to 5	3 to 5	-1 to 2
<b>PPΔ</b>				
Mean±SE	0±0.7	6±0.7	2±0.7	2±0.7
(p)	1.000	<b>0.000</b>	0.11	<b>0.02</b>
95% CI	-2 to 2	4 to 8	0 to 4	0 to 4
<b>PulseΔ</b>				
Mean±SE	0±0.5	7±0.5	5±0.5	4±0.5
(p)	1.000	<b>0.000</b>	<b>0.000</b>	<b>0.000</b>
95% CI	-1 to 2	5 to 8	3 to 6	2 to 5
<b>SDPPP index</b>				
Mean±SE	4±1.4	26±1.4	13±1.4	9±1.4
(p)	<b>0.03</b>	<b>0.000</b>	<b>0.000</b>	<b>0.000</b>
95% CI	0 to 8	22 to 30	9 to 17	5 to 13

Δ, difference. Bold figures, statistically significant (p<0.05). DBP, diastolic blood pressure; PP, pulse pressure; SBP, systolic blood pressure; SDPPP, sum of pre/immediate-post-ETOIMS changes in systolic, diastolic, pulse pressure and pulse/heart rate; TWF, twitch force.

We were thus able to illustrate that the pain reduction from the exercise effects of the twitches focused on the MTrPs was the main factor that decreased the sympathetic tone, shown as a reduction in BP in ETOIMS-treated individuals.<sup>1 2</sup> Also, ETOIMS was able to increase the parasympathetic tone (see later) noted as pulse/heart rate reduction since these findings were not noted with rest/sleep.

The increase in diastolic BP postsleeping has been noted in advancing age in women.<sup>5</sup> We propose that the mild increase in diastolic BP after sleeping is probably related to inactivity and lack of movement/muscle contractions during sleep, and not due to increased sympathetic tone since the more vigorous exercise effects of TWF3–5 consistently lowered systolic pressure.

CRPS can develop after an initiating noxious event or immobilisation.<sup>6</sup> Characteristics of CRPS-I include continuing pain, allodynia and hyperalgesia disproportionate to the inciting event. Oedema, changes in skin blood flow or abnormal sudomotor activity in the painful region may occur. CRPS-II has similar symptoms that develop after a nerve injury not necessarily limited to the distribution of the injured nerve.<sup>6</sup> Temperature changes, swelling, reduced joint ROM, weakness, tremor/dystonia, skin atrophy or altered hair/nail growth, localised osteoporosis<sup>7</sup> and alterations in body perception<sup>8</sup> can occur.

A conservative 11-year prevalence rate for CRPS is 20.57 per 100 000 people,<sup>9</sup> occurring three to four

**Table 1C** Multiple comparisons of blood pressure/pulse changes between twitch forces 2 and 5

	TWF2 vs TWF3	TWF2 vs TWF4	TWF2 vs TWF5	TWF3 vs TWF4	TWF3 vs TWF5	TWF4 vs TWF5
<b>SBPΔ</b>						
Mean±SE	8±0.7	3±0.7	1±0.7	-5±0.7	-6±0.7	-1±0.7
(p)	<b>0.000</b>	<b>0.002</b>	0.551	<b>0.000</b>	<b>0.000</b>	0.645
95% CI	6 to 10	0 to 5	0 to 3	-7 to -3	-8 to -4	-3 to 1
<b>DBPΔ</b>						
Mean±SE	1±0.4	1±0.4	-2±0.4	0±0.4	-3±0.4	-3±0.4
(p)	1.000	0.204	<b>0.000</b>	1.000	<b>0.000</b>	<b>0.000</b>
95% CI	-1 to 2	0 to 2	-4 to -1	-1 to 2	-4 to -2	-5 to -2
<b>PPΔ</b>						
Mean±SE	6±0.7	2±0.7	2±0.7	-4±0.7	-4±0.7	0±0.7
(p)	<b>0.000</b>	0.069	<b>0.011</b>	<b>0.000</b>	<b>0.000</b>	1.000
95% CI	4 to 8	0 to 4	0 to 4	-6 to -2	-5 to -2	-2 to 2
<b>PulseΔ</b>						
Mean±SE	7±0.5	5±0.5	3±0.5	-2±0.5	-3±0.5	-1±0.5
(p)	<b>0.000</b>	<b>0.000</b>	<b>0.000</b>	<b>0.002</b>	<b>0.000</b>	0.218
95% CI	5 to 8	3 to 6	2 to 5	-3 to 0	-5 to -2	-3 to 0
<b>SDPPP index</b>						
Mean±SE	22±1.4	9±1.4	4±1.4	-12±1.4	-17±1.4	-5±1.4
(p)	<b>0.000</b>	<b>0.000</b>	<b>0.018</b>	<b>0.000</b>	<b>0.000</b>	<b>0.007</b>
95% CI	18 to 26	5 to 13	0 to 8	-16 to -8	-21 to -13	-9 to -1

Δ, difference. Bold figures, statistically significant (p<0.05).

DBP, diastolic blood pressure; PP, pulse pressure; SBP, systolic blood pressure; SDPPP, sum of pre/immediate-post-ETOIMS changes in systolic, diastolic, pulse pressure and pulse/heart rate; TWF, twitch force.

times more often in women and is more frequent with increasing age.<sup>10</sup> CRPS most commonly follows minor or major trauma as with fractures/dislocations, especially intra-articular, of distal limb/joints or with pre-existing rheumatoid arthritis or musculoskeletal comorbidities (low back pain, arthrosis), limb immobilisation<sup>11</sup> and rarely spontaneously.<sup>12</sup>

The underlying pathophysiological mechanisms may include an aberrant inflammatory response, ANS and central nervous system (CNS) dysfunction.<sup>13</sup> There are signs of increased neurogenic inflammation,<sup>14</sup> small-fibre neuropathy,<sup>15</sup> an altered local immune response,<sup>16</sup> altered activity in the sympathetic nervous system (SNS),<sup>17</sup> increased sensitivity to normal SNS activity<sup>18</sup> and local tissue hypoxia.<sup>19 20</sup> Changes have been demonstrated in the brain in CRPS,<sup>21</sup> including alterations of the cortical representation of the affected body part,<sup>22</sup> localised reductions in grey matter density

and connectivity,<sup>23</sup> altered inhibitory control<sup>24</sup> and genetic susceptibility.<sup>25</sup> Psychological traits (depression, anxiety, neuroticism and anger) have been discounted as CRPS risk factors.<sup>26</sup>

CRPS symptoms likely reflect combined effects of axonal degeneration and plasticity, inappropriate firing and neurosecretion by residual axons, and DS. The resulting tissue oedema, hypoxia and secondary CNS changes can exacerbate symptoms and perpetuate pathology. Microvascular permeability contributes to oedema, and combined with elevated increased peripheral venous pressure contributes to the inflammatory origin of CRPS.<sup>27</sup>

Sympathetic dysfunction in extremities of patients distal to site of trauma consists of hypersensitivity to catecholamines as a result of autonomic denervation, whereas SNS impulses may be increased proximal to the site of trauma.<sup>28</sup> Persistent CRPS-I is a post-traumatic

**Table 2** Spearman correlations for pain scores, blood pressures and pulse/heart rate for various twitch forces against number of treatments

	Treatment #Resting Significance r (p) n=202	Treatment #TWF2 Significance r (p) n=202	Treatment #TWF3 Significance r (p) n=202	Treatment #TWF4 Significance r (p) n=202	Treatment # TWF5 Significance r (p) n=202
Pain score	not applicable	not applicable	<b>0.30 (0.00)</b>	<b>-0.36 (0.00)</b>	<b>-0.85 (0.00)</b>
SBP	0.07 (0.35)	<b>-0.66 (0.00)</b>	<b>-0.22 (0.00)</b>	<b>-0.62 (0.00)</b>	<b>-0.39 (0.00)</b>
DBP	-0.05 (0.51)	<b>-0.34 (0.00)</b>	<b>-0.67 (0.00)</b>	<b>-0.59 (0.00)</b>	-0.07 (0.31)
Pulse	<b>0.19 (0.00)</b>	<b>0.16 (0.03)</b>	-0.03 (0.64)	<b>-0.36 (0.00)</b>	<b>-0.39 (0.00)</b>

Bold figures, statistically significant (p<0.05)

DBP, diastolic blood pressure; r, correlation coefficient; SBP, systolic blood pressure; TWF, twitch force.

neuralgia associated with distal degeneration of small-diameter peripheral axons. The most frequent symptoms of autonomic involvement and small-fibre abnormalities include spontaneous pain, dysesthesias, allodynia, sudomotor dysfunction (anhidrosis) and orthostatic hypotension, and our patient with CRPS with maximum TWF3 has all these features.

Like in CRPS, chronic pain magnitude in fibromyalgia is directly related to small-fibre sympathetic drive to the heart and great vessels. Substance P in the blood stimulates the release of interleukin (IL)-8, which promotes sympathetic pain, and IL-6, which induces hyperalgesia, fatigue and depression common in fibromyalgia.<sup>29</sup> Our patient did not have such blood studies but has clinical evidence of small-fibre sympathetic drive that occurs with fibromyalgia. As in humans with fibromyalgia, chronic widespread pain in rats shifts the cardiac sympathovagal balance towards sympathetic predominance and decreases spontaneous baroreflex sensitivity.<sup>30</sup> ETOIMS was able to reduce pain by restoring the cardiac sympathovagal balance. It has the capacity to reduce sympathetic tone evidenced by reduction in BP and increasing parasympathetic tone evidenced by reduction in pulse/heart rate.

Experimental activation of carotid baroreceptors triggers marked antinociceptive effects.<sup>31</sup> There is an inverse relationship between lower cardiac baroreflex functioning and higher levels of clinical pain.<sup>32</sup> Pathways that modulate pain such as nucleus tractus solitarius (NTS) receive baroreceptor input from the glossopharyngeal and vagus nerves and projection from neurons in the spinal laminae involved in nociceptive processing. Periaqueductal grey, nucleus raphe magnus and rostral ventrolateral medulla receive direct or indirect inputs from NTS. In persistent pain, baroreceptor afferents may alter nociceptive processing and subjective pain experience through modulation of the activity of above structures.<sup>33</sup> There is clinical evidence that ETOIMS effects may result from the influence on carotid baroreceptors when treatments are performed on neck muscles as well as sternocleidomastoid muscles.

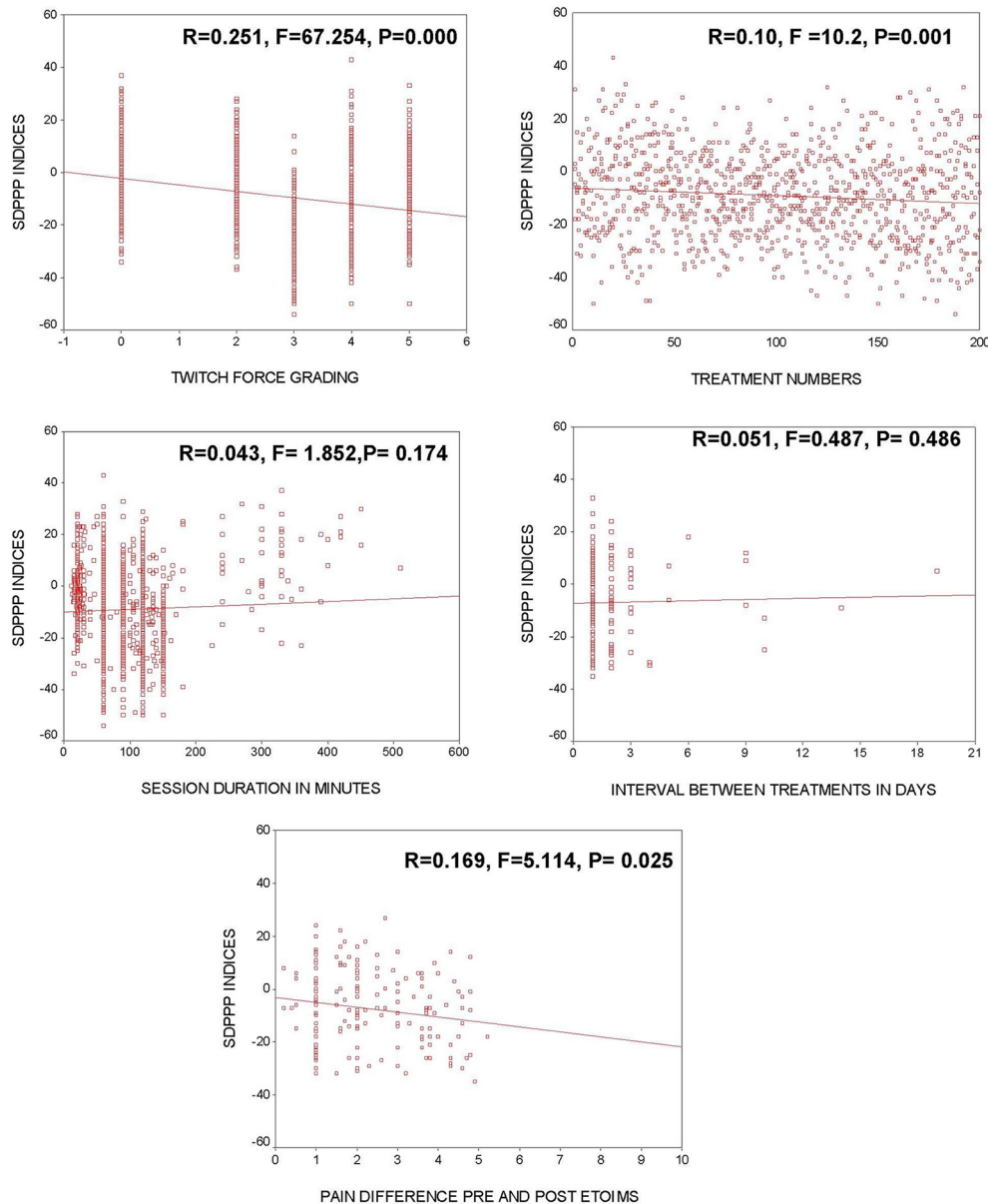
Electrophysiologically, a motor point is where single muscle contractions occur with minimum intensity and short-duration electrical pulses.<sup>34</sup> Anatomically, it is the area where motor end plates, namely the terminal area of motor nerve fibres, are dense. The stimulus parameters used for evoking twitches are similar to those used in electrodiagnostic medicine for peripheral nerve conduction studies. Repetitive stimulation at 2–3 Hz tests the stability of neuromuscular transmission by temporarily depleting acetylcholine at diseased or immature end plates causing fatigue in neuropathic conditions.<sup>34</sup> Similarly, using 2–3 Hz stimulation, fatigable autonomous twitches elicited with ETOIMS signify neurogenic involvement with an unstable neuromuscular transmission. ETOIMS is thus more sensitive for earlier diagnosis and useful for real-time follow-up for partial or

neurapraxic axonal involvement than needle electromyography.<sup>1,2</sup>

With ETOIMS, single muscle twitch contractions evoked precisely locate MTrPs for therapeutic pain relief. ETOIMS is used as an aerobic exercise therapy that performs neuromuscular re-education allowing MTrPs to properly function again without the need for external electrical stimulation to elicit twitches when autonomous twitches erupt. Partial denervation and/or conduction block in the presence of DS leads to ongoing MTrPs formation in many myotomes at various times daily with activities of daily living. Although mechanical stretching is used commonly, the forces delivered from the surface occur to many muscles simultaneously and therefore are not effective in stretching shortened muscle fibres,<sup>35</sup> especially at deep MTrPs. ETOIMS makes stretching more consistent through the application of twitch-induced stretch forces, as well as many twitches focused on problematic MTrPs with the elicitation of TW4 and TW5 autonomous twitches.<sup>1,2</sup>

Important factors for pain reduction were TWFs and number of treatments (figure 1), with TWF being more significant than the number of treatments for reducing the SDPPP index (figure 2). ETOIMS thus reduces sympathetic tone and increases parasympathetic vagal tone. Vagus nerve stimulation can occur due to DS on treating trapezius and sternocleidomastoid muscles supplied by the accessory nerve whose cranial portion is part of the vagus nerve. This, in turn, increased baroreceptor sensitivity to alleviate pain<sup>36,37</sup> with decreased pulse/heart rate,<sup>1,2</sup> as noted in patients with TWF4 and TWF5. However, lack of correlation of treatments over time to pulse/heart rate in the TWF3 patient indicates poor vagal tone, although ETOIMS reduced sympathetic tone in the TWF3 patient similar to other individuals. The increase in heart rate in the control subject is compensatory to a reduction in BP with increasing number of treatments. Rest reduces vagal tone (table 2), confirming that pulse/heart rate reduction with ETOIMS is through vagal stimulation.

Also, the presence of significant hypertonicity of muscles supplied by accessory nerve may add to inhibit vagal nerve stimulation in the TWF3 patient. This is the most critical reason since the vagus nerve inhibits sympathetic activity and modulates inflammation, oxidative stress, brain activity and opioid receptors.<sup>38</sup> Similarly, hypertonicity in other muscles prevented electrical spread from reaching MTrPs, with DS needed for local and remote autonomous twitch elicitation. He thus had to take more treatments without progressive pain relief as with the TWF4 and TWF5 patients. The similar BP (except for diastolic BP) and pulse/heart rate in patients with TWF4 and TWF5 indicated that the most significant factor that was responsible for slow fatigue was more muscle hypertonicity in TWF4 than in TWF5 patient.



**Figure 2** Linear regressions for pain difference (pre-ETOIMS/immediate-post-ETOIMS) and treatment numbers, twitch force grading, session duration and treatment intervals. ETOIMS (Electrical Twitch-Obtaining Intramuscular Stimulation); SDPPP indices (summed Systolic–Diastolic–PulsePressure–Pulse differences pre and post- ETOIMS).

Mixed peripheral nerves contain motor, sensory and small-fibre postganglionic sympathetic axons and small somatic fibres (thinly myelinated (A-delta) or unmyelinated (C-fibre)). The ratio of unmyelinated to myelinated fibre density in mixed peripheral nerves is 3.7:1.<sup>39</sup> A-delta or unmyelinated C-fibre detect and transmit information triggered by mechanical, thermal and chemical stimuli. Critical vasomotor and trophic efferent functions may contribute to CRPS, through the antidromic release of calcitonin gene-related peptide and substance P.<sup>19</sup> Small-fibre degeneration and pain often precede degeneration of myelinated fibres in sensorimotor polyneuropathies.<sup>40</sup> After traumatic injury to rat sciatic nerve, the cell bodies of small-diameter axons in the dorsal root ganglion and their

central axons degenerate preferentially.<sup>41</sup> This explains how trauma can cause small-fibre predominant axonal degeneration, dysfunction and CRPS without apparent large-fibre injury.

Mechanisms of CRPS in animal models include ephaptic transmission, adrenergic receptors on sensory neurons, the indirect coupling of sympathetic and sensory neurons, sensitisation of nociceptive afferents, and sensitisation of dorsal horn neurons from the CNS.<sup>42</sup> Postganglionic muscle sympathetic nerve activity recordings show underlying excessive sympathetic activity. Body nociceptors may develop catecholamine sensitivity, enabling norepinephrine released by sympathetic nerve fibres to activate/sensitise afferent neurons, eventually

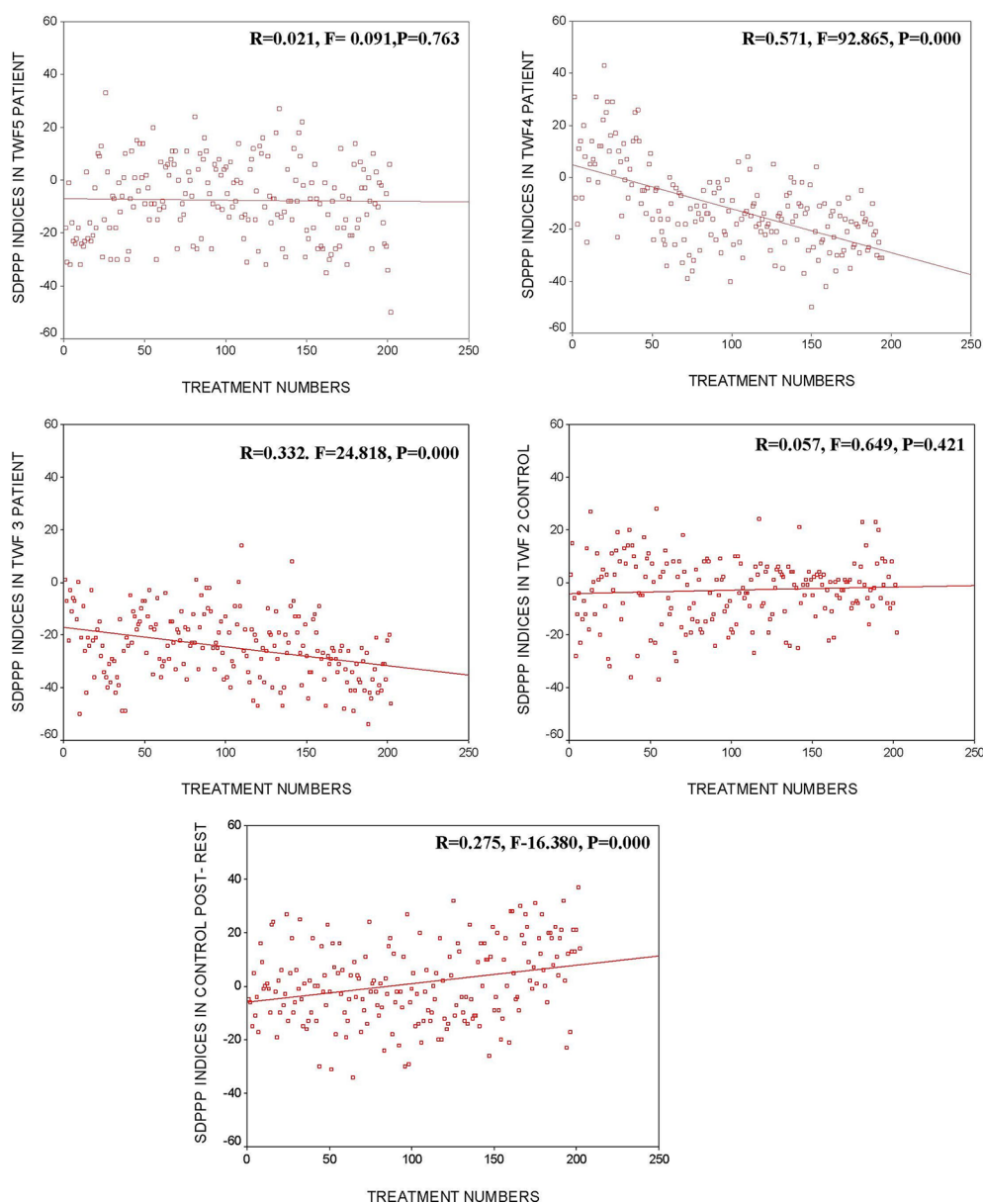


resulting in increased nociceptive firing and CNS sensitisation, which play a crucial role in generating and sustaining chronic pain.<sup>38</sup> An inverse relationship exists between lower cardiac baroreflex functioning and higher levels of clinical pain. The higher the sympathetic drive to the heart and vessels, the higher the magnitude of chronic pain,<sup>43</sup> as exemplified in our patient.

In addition to sympathetic dysfunction, nociceptive C and A-delta somatosensory axons also innervate blood vessels. Their degeneration or neuroeffector secretions can produce signs of neurogenic inflammation.<sup>19</sup> Some dermal vessels entirely lack sympathetic innervation,<sup>39</sup> so peripheral microvascular dysregulation does not always implicate sympathetic involvement or dysautonomia. Increased heart rate

and decreased heart rate variability at rest in patients with CRPS suggest a general autonomic imbalance with sustained stress response.<sup>44</sup> SDPPP index changes in the TWF3 patient, which differs significantly from other subjects and is compatible with general autonomic imbalance (figure 3).

As with other neural injuries, conditions that destroy some small fibres, or tissue changes triggered by partial axonal loss (eg, upregulation of growth factors), can cause neighbouring survivors to malfunction. Surviving small fibres with reduced thresholds for ectopic firing<sup>45</sup> have been termed angry or irritable nociceptors.<sup>46 47</sup> Damage to peripheral axons of primary afferents usually affects their central axon and triggers diffuse glial activation and abnormalities of postsynaptic neurons in the dorsal horn and higher centres.<sup>48</sup> This typifies neuropathic pain as



**Figure 3** Linear regressions for SDPPP indices and twitch force grading, treatment numbers, session duration and treatment intervals. SDPPP, systolic–diastolic–pulse pressure–pulse; TWF, twitch force.

a systems disorder, with abnormal firing of central pain neurons from reduced activity of inhibitory interneurons in the dorsal horn.

## TREATMENTS FOR CRPS

### Low-quality evidence

These studies were found to provide short-term relief of CRPS pain on systematic review of treatments compared with placebos,<sup>49</sup> and they include the following: (1) ketamine (N-methyl-d-aspartate receptor antagonist), bisphosphonates (used in osteoporosis) and calcitonin (calcium-lowering hormone), and intravenous pamidronate; (2) graded motor-imagery programmes may reduce pain and improve function for 3–6 months, compared with conventional physiotherapy/exercises (PT); (3) mirror therapy may reduce pain and improve function more than controlled sham condition in post-stroke CRPS; (4) PT or OT versus social work passive attention control is associated with small positive effects at 1-year follow-up; (5) oral corticosteroids; (6) epidural clonidine (centrally acting  $\alpha_2$  adrenergic agonist), intravenous regional block (IVRB) ketanserin (5-HT<sub>2</sub> receptor antagonist) and IVRB bretylium (blocks release of norepinephrine from nerve terminals); (7) sympathetic blockade with botulinum toxin A may deliver a longer duration pain relief than local anaesthetic sympathetic blockade; and (8) topical dimethyl sulfoxide (DMSO) improves patients' self-ratings of improvement and achieves greater improvements in composite CRPS scores<sup>50</sup> than IVRB with guanethidine.

CRPS scores are standardised, common methodology for making decisions as to whether unidentified pain conditions represent CRPS or not. Significant improvements had been made in terms of quantification and significant objectification of the diagnostic data.<sup>50</sup> However, ETOIMS treatment-related SDPPP indices reduction by  $\geq 26$  and pulse/heart rate reduction by  $\geq 8$ /min consistently with almost every treatment are objective. The use of SDPPP is practical and is useful for the clinician in the real-time diagnosis, treatment, prognosis and follow-up of CRPS.

Not found to be more effective than placebo<sup>49</sup> are (1) topical DMSO; (2) intravenous mannitol; (3) gabapentin (antiepileptic medication); gabapentin at doses of 1200 mg or more was effective for some patients with some painful neuropathic pain conditions, with 35% experiencing pain relief compared with 21% for placebo; (4) sarpogrelate hydrochloride (selective 5-HT<sub>2</sub> antagonist), intravenous lidocaine (local anaesthetic) or tadalafil (phosphodiesterase isozymes inhibitor and vasodilator), IVRB atropine (anticholinergic), and IVRB droperidol (antidopaminergic drug); and (5) repetitive transcranial magnetic stimulation, ultrasound, pulsed electromagnetic field, relaxation therapy and manual lymphatic drainage.

Found effective in improving pain are (1) spinal cord stimulation plus PT, as opposed to PT alone;

(2) PT and OT, as opposed to passive attention social work control for 6 months; PT but not OT improves impairment for 4 months compared with the same control; (3) Qigong therapy compared with sham Qigong therapy; and (4) acupuncture, which offers short-term improvement in pain not superior to sham when added to rehabilitation compared with rehabilitation alone in poststroke CRPS. Electroacupuncture plus rehabilitation therapies might be more effective than lidocaine, triamcinolone acetonide and vitamin B<sub>12</sub>.

There is no evidence from controlled trials on the efficacy of surgical sympathectomy.

Surgical decompression may provide the most effective pain relief for lesions that are clearly localised in patients where nerve exploration is appropriate. Ablative (nerve cutting or neurodestructive) procedures are not indicated.<sup>15</sup> Local anaesthetic sympathetic blockade is not effective. Unlike ETOIMS, the limitation of most of these treatments is that they cannot be safely and efficaciously used over prolonged periods of time nor can their effects be quantified objectively in the long-term management of persistent pain due to CRPS.

## RELATED INVESTIGATIONS

Evaluation of small fibres with diameter  $< 6 \mu\text{m}$ , higher depolarisation threshold and slower conduction velocity usually need tests to guide adequate therapy and optimise follow-up. Tests include cardiovascular monitoring, sudomotor testing, pupillary responses, quantitative sensory tests, thermography and laser evoked potentials. To record C-fibre activity, invasive, complex, costly, time-consuming, high interindividually variable micrographic techniques are available but mostly for experimental studies.

To manage CRPS, it is essential for clinicians to have access to simple, objective, reproducible and cost-effective systems such as ETOIMS. The heart is constantly controlled by sympathetic and parasympathetic divisions of the ANS. Blood vessels are controlled predominantly by the SNS to maintain appropriate BP and organ blood flow over widely varying conditions. This can be adversely affected by pathological conditions that can damage one or both branches of the ANS.<sup>51 52</sup> The pain and hypertension relationship involves ascending acute nociception, which recruits segmental spinal reflexes causing activation of the SNS. As with the TWF3 patient, this increases peripheral resistances, heart rate and stroke volume. The response also involves the hypothalamic–pituitary–adrenal axis, with further activation of the SNS by the adrenal glands.

Serial vital signs assessments recorded for analysis with statistical process control method can detect subtle changes that are not due to chance, thus obviating the need for randomised controlled studies. Suspected CRPS with ANS dysfunction can be

detected within a few ETOIMS sessions (figures 1–3 and tables 1–2) if SDPPP indices reduce by  $\geq 26$  and pulse/heart rate reduces by  $\geq 8$ /min consistently with almost every treatment. Pulse/heart rate is the most significant contributor to the SDPPP index (table 1A). Since TWF is most important in the reduction of pain, BP and pulse/heart rate, the inability to evoke local and remote autonomous large force twitches due to muscle hypertonicity of ANS dysfunction maintains the severe persistent pain. Rat experiments showed that muscle activity reduces DS.<sup>53</sup> For effective pain relief, local and remote large force autonomous twitches are essential also for reduction in sympathetic tone with an increase in parasympathetic vagal tone.

## CONCLUSIONS

ETOIMS is highly suitable for pain relief and useful in real-time clinical diagnosis and prognosis in persistent pain associated with autonomic dysfunction in CRPS. The inability to evoke autonomous twitches plus the ability of ETOIMS to favourably affect BP and heart rate remarkably are pathognomonic of CRPS. These are useful armamentarium that can distinguish the presence of autonomic involvement in CRPS for further management decisions.

**Twitter** @stopmusclepain

**Contributors** JC was responsible for planning, conducting and reporting of the work described in the submitted article. For the neurophysiology section input/feedback: FB. For the statistics section input/ feedback: DVN.

**Competing interests** JC is the sole inventor of ETOIMS and holds patents for the bipolar probe and electrodes. She is Emeritus Associate Professor, Physical Medicine and Rehabilitation, Perelman School of Medicine, University of Pennsylvania, USA, email: jchu@etoims.com. Mailing address: 233 East Lancaster Avenue, Suite 101, Ardmore, PA 19003-2321, USA

**Patient consent** None obtained.

**Provenance and peer review** Not commissioned; externally peer reviewed.

**Data sharing statement** We have submitted all data relating to this manuscript to BMJ Innovations. All previous data have been published in BMJ and these are the links: <http://casereports.bmj.com/cgi/content/full/bcr-2015-211816?ijkey=TFlyCCTz1g85rzB&keytype=ref> and <http://innovations.bmj.com/cgi/content/abstract/bmjinnov-2016-000151>.

**Open Access** This is an Open Access article distributed in accordance with the Creative Commons Attribution Non Commercial (CC BY-NC 4.0) license, which permits others to distribute, remix, adapt, build upon this work non-commercially, and license their derivative works on different terms, provided the original work is properly cited and the use is non-commercial. See: <http://creativecommons.org/licenses/by-nc/4.0/>

© Article author(s) (or their employer(s) unless otherwise stated in the text of the article) 2017. All rights reserved. No commercial use is permitted unless otherwise expressly granted.

## REFERENCES

- 1 Chu J, Bruyninckx F, Neuhauser DV. Chronic refractory myofascial pain and denervation supersensitivity as global public health disease. *BMJ Case Rep* 2016;2016:bcr2015211816.
- 2 Chu J, McNally S, Bruyninckx F, *et al.* Migraine and persistent pain from sports/cumulative trauma are helped with ETOIMS. *BMJ Innovations* 2017;3:104–14.
- 3 Geddes LA. Electroventilation—a missed opportunity? *Biomedical instrumentation & technology* 1998;4:401–14.
- 4 Wielemborek-Musial K, Szmigielska K, Leszczynska J, *et al.* Blood Pressure Response to Submaximal Exercise Test in Adults. *Biomed Res Int* 2016;2016:1–8.
- 5 Perez-Lloret S, Toblli JE, Cardinali DP, *et al.* Gender differences in age-related increase of asleep blood pressure. *Arch Gerontol Geriatr* 2010;50:319–22.
- 6 Merskey H, Bogduk N. *Classification of chronic pain: descriptions of chronic pain syndromes and definitions of pain terms*. 2nd ed. Seattle, WA: IASP Press, 1994. IASP Diagnostic Criteria for CRPS-I (Reflex Sympathetic Dystrophy).
- 7 Bruehl S. An update on the pathophysiology of complex regional pain syndrome. *Anesthesiology* 2010;113:1–25.
- 8 Lewis JS, Kersten P, McCabe CS, *et al.* Body perception disturbance: a contribution to pain in complex regional pain syndrome (CRPS). *Pain* 2007;133:111–9.
- 9 Sandroni P, Benrud-Larson LM, McClelland RL, *et al.* Complex regional pain syndrome type I: incidence and prevalence in Olmsted county, a population-based study. *Pain* 2003;103:199–207.
- 10 Shipton EA. Complex regional pain syndrome – Mechanisms, diagnosis, and management. *Current Anaesthesia & Critical Care* 2009;20:209–14.
- 11 Beerhuizen A, Stronks DL, Van't Spijker A, *et al.* Demographic and medical parameters in the development of complex regional pain syndrome type 1 (CRPS1): prospective study on 596 patients with a fracture. *Pain* 2012;153:1187–92.
- 12 de Mos M, Huygen FJ, Dieleman JP, *et al.* Medical history and the onset of complex regional pain syndrome (CRPS). *Pain* 2008;139:458–66.
- 13 Marinus J, Moseley GL, Birklein F, *et al.* Clinical features and pathophysiology of complex regional pain syndrome. *Lancet Neurol* 2011;10:637–48.
- 14 Schinkel C, Gaertner A, Zaspel J, *et al.* Inflammatory mediators are altered in the acute phase of posttraumatic complex regional pain syndrome. *Clin J Pain* 2006;22:235–9.
- 15 Oaklander AL, Fields HL. Is reflex sympathetic dystrophy/complex regional pain syndrome type I a small-fiber neuropathy? *Ann Neurol* 2009;65:629–38.
- 16 Tan EC, Oyen WJ, Goris RJ. Leukocytes in complex regional pain syndrome type I. *Inflammation* 2005;29:182–6.
- 17 Niehof SP, Huygen FJ, van der Weerd RW, *et al.* Thermography imaging during static and controlled thermoregulation in complex regional pain syndrome type 1: diagnostic value and involvement of the central sympathetic system. *Biomed Eng Online* 2006;5:30.
- 18 Albrecht PJ, Hines S, Eisenberg E, *et al.* Pathologic alterations of cutaneous innervation and vasculature in affected limbs from patients with complex regional pain syndrome. *Pain* 2006;120:244–66.
- 19 Birklein F, Schmelz M. Neuropeptides, neurogenic inflammation and complex regional pain syndrome (CRPS). *Neurosci Lett* 2008;437:199–202.
- 20 Koban M, Leis S, Schultze-Mosgau S, *et al.* Tissue hypoxia in complex regional pain syndrome. *Pain* 2003;104:149–57.
- 21 Swart CM, Stins JF, Beek PJ. Cortical changes in complex regional pain syndrome (CRPS). *Eur J Pain* 2009;13:902–7.

- 22 Pleger B, Ragert P, Schwenkreis P, *et al.* Patterns of cortical reorganization parallel impaired tactile discrimination and pain intensity in complex regional pain syndrome. *Neuroimage* 2006;32:503–10.
- 23 Geha PY, Baliki MN, Harden RN, *et al.* The brain in chronic CRPS pain: abnormal gray-white matter interactions in emotional and autonomic regions. *Neuron* 2008;60:570–81.
- 24 Schwenkreis P, Janssen F, Rommel O, *et al.* Bilateral motor cortex disinhibition in complex regional pain syndrome (CRPS) type I of the hand. *Neurology* 2003;61:515–9.
- 25 de Rooij AM, de Mos M, Sturkenboom MC, *et al.* Familial occurrence of complex regional pain syndrome. *Eur J Pain* 2009;13:171–7.
- 26 Lohnberg JA, Altmeyer EM. A review of psychosocial factors in complex regional pain syndrome. *J Clin Psychol Med Settings* 2013;20:247–54.
- 27 Schürmann M, Zaspel J, Gradl G, *et al.* Assessment of the peripheral microcirculation using computer-assisted venous congestion plethysmography in post-traumatic complex regional pain syndrome type I. *J Vasc Res* 2001;38:453–61.
- 28 Kurvers HA, Hofstra L, Jacobs MJ, *et al.* Reflex sympathetic dystrophy: does sympathetic dysfunction originate from peripheral neuropathy? *Surgery* 1996;119:288–96.
- 29 Wallace MS, Ridgeway BM, Leung AY, *et al.* Concentration-effect relationship of intravenous lidocaine on the allodynia of complex regional pain syndrome types I and II. *Anesthesiology* 2000;92:75–83.
- 30 Oliveira LR, de Melo VU, Macedo FN, *et al.* Induction of chronic non-inflammatory widespread pain increases cardiac sympathetic modulation in rats. *Auton Neurosci* 2012;167:45–9.
- 31 Aicher SA, Randich A. Antinociception and cardiovascular responses produced by electrical stimulation in the nucleus tractus solitarius, nucleus reticularis ventralis, and the caudal medulla. *Pain* 1990;42:103–19.
- 32 Zamunér AR, Barbic F, Dipaola F, *et al.* Relationship between sympathetic activity and pain intensity in fibromyalgia. *Clin Exp Rheumatol* 2015;33:S53–S57.
- 33 Bruehl S, Chung OY. Interactions between the cardiovascular and pain regulatory systems: an updated review of mechanisms and possible alterations in chronic pain. *Neurosci Biobehav Rev* 2004;28:395–414.
- 34 Dumitru D. Nerve and muscle anatomy and physiology. In: King JC, Robinson LR, Spielholz NI, eds. *Electrodiagnostic medicine*. 1st ed. Philadelphia: Henley & Belfus Inc, 1995.
- 35 Law RY, Harvey LA, Nicholas MK, *et al.* Stretch exercises increase tolerance to stretch in patients with chronic musculoskeletal pain: a randomized controlled trial. *Phys Ther* 2009;89:1016–26.
- 36 Tronvik E, Stovner LJ, Hagen K, *et al.* High pulse pressure protects against headache: prospective and cross-sectional data (HUNT study). *Neurology* 2008;70:1329–36.
- 37 Bartur G, Vatine JJ, Raphaely-Beer N, *et al.* Heart rate autonomic regulation system at rest and during paced breathing among patients with CRPS as compared to age-matched healthy controls. *Pain Med* 2014;15:1569–74.
- 38 De Couck M, Nijs J, Gidron Y. You may need a nerve to treat pain: the neurobiological rationale for vagal nerve activation in pain management. *Clin J Pain* 2014;30:1099–105.
- 39 Ochoa J, Mair WG. The normal sural nerve in man. I. ultrastructure and numbers of fibres and cells. *Acta Neuropathol* 1969;13:197–216.
- 40 Llewelyn JG, Gilbey SG, Thomas PK, *et al.* Sural nerve morphometry in diabetic autonomic and painful sensory neuropathy. A clinicopathological study. *Brain* 1991;114:867–92.
- 41 Tandrup T, Woolf CJ, Coggeshall RE. Delayed loss of small dorsal root ganglion cells after transection of the rat sciatic nerve. *J Comp Neurol* 2000;422:172–80.
- 42 McMahon SB. Mechanisms of sympathetic pain. *Br Med Bull* 1991;47:584–600.
- 43 Zamunér AR, Barbic F, Dipaola F, *et al.* Relationship between sympathetic activity and pain intensity in fibromyalgia. *Clin Exp Rheumatol* 2015;33:S53–7.
- 44 Holzer P. Control of the cutaneous vascular system by afferent neurons. In: Morris JL, Gibbins IL, eds. *Autonomic Innervation of the Skin*. Amsterdam, Holland: Harwood Academic Publishers, 1997:213–67.
- 45 Wu G, Ringkamp M, Hartke TV, *et al.* Early onset of spontaneous activity in uninjured C-fiber nociceptors after injury to neighboring nerve fibers. *J Neurosci* 2001;21:RC140.
- 46 Fields HL, Rowbotham M, Baron R. Postherpetic neuralgia: irritable nociceptors and deafferentation. *Neurobiol Dis* 1998;5:209–27.
- 47 Ochoa JL, Campero M, Serra J, *et al.* Hyperexcitable polymodal and insensitive nociceptors in painful human neuropathy. *Muscle Nerve* 2005;32:459–72.
- 48 Lee JW, Siegel SM, Oaklander AL. Effects of distal nerve injuries on dorsal-horn neurons and glia: relationships between lesion size and mechanical hyperalgesia. *Neuroscience* 2009;158:904–14.
- 49 O'Connell NE, Wand M, McAuley J, *et al.* Interventions for treating pain and disability in adults with complex regional pain syndrome- an overview of systematic reviews. *Cochrane Database of Systematic Reviews* 2013:4. John Wiley & Sons, Ltd.
- 50 Harden RN. Objectification of the diagnostic criteria for CRPS. *Pain Med* 2010;11:1212–5.
- 51 Quan KJ, Carlson MD, Thames MD. *Mechanisms of heart rate and arterial blood pressure control: implications for the pathophysiology of neurocardiogenic syncope pacing & clinical electrophysiology*. 1997;20:764–74.
- 52 Santiago S, Ferrer T, Espinosa ML. Neurophysiological studies of thin myelinated (A delta) and unmyelinated (C) fibers: application to peripheral neuropathies. *Neurophysiol Clin* 2000;30:27–42.
- 53 Lomo T, Rosenthal J. Control of ACh sensitivity by muscle activity in the rat. *J Physiol* 1972;221:493–513.